

WINSTAR Display

OLED SPECIFICATION

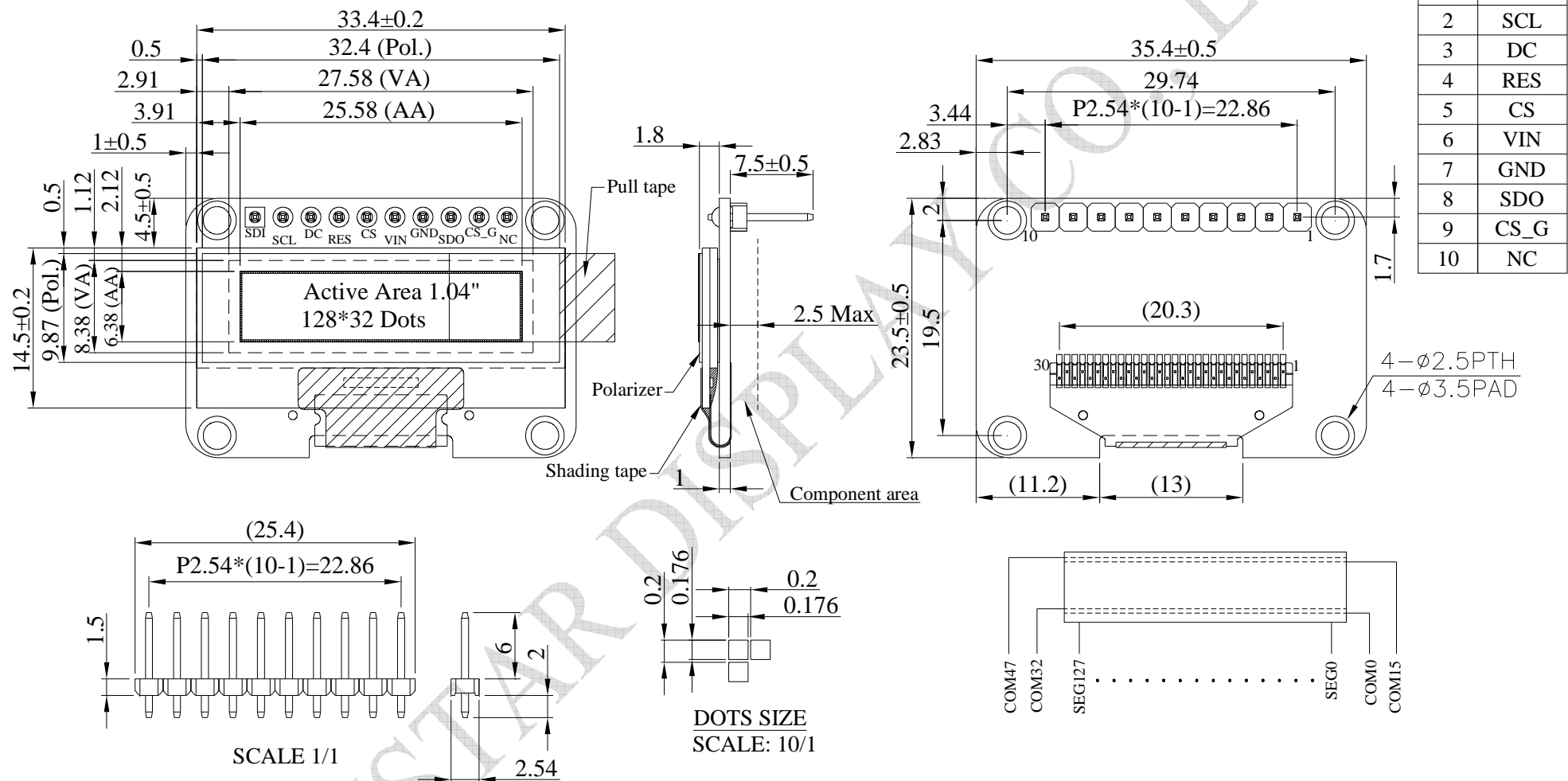
Model No:

WEA012832E

General Specification

Item	Dimension	Unit
Dot Matrix	128 x 32 Dots	—
Module dimension	35.4 × 23.5 × 1.8	mm
Active Area	25.58 × 6.38	mm
Pixel Size	0.176 × 0.176	mm
Pixel Pitch	0.200× 0.200	mm
Display Mode	Passive Matrix	
Display Color	Monochrome	
Drive Duty	1/32 Duty	
IC	SSD1306	
Font IC	GT21L16T1W (Traditional Chinese) GT21L16S2W (Simplified Chinese)	
Interface	SPI	
Size	1.04 inch	

Contour Drawing & Block Diagram



PIN	SYMBOL
1	SDI
2	SCL
3	DC
4	RES
5	CS
6	VIN
7	GND
8	SDO
9	CS_G
10	NC

The non-specified tolerance of dimension is ±0.3mm.

Interface Pin Function

No.	Symbol	Function
1	SDI	Serial data input This pin connects font IC of SDI and OLED drive IC of SDI.
2	SCL	Serial clock input This pin connects font IC of SCL and OLED drive IC of SCL.
3	DC	This is Data/Command control pin.
4	RES	This pin is reset signal input. When the pin is pulled LOW, initialization of the chip is executed.
5	CS	This pin is the chip select input. (active LOW).
6	VIN	Input voltage for 2.8 ~ 5.2V power supply.
7	GND	This is a ground pin.
8	SDO	Serial Data Output for font IC. Data is shifted out on the falling edge of the serial clock.
9	CS_G	Chip Select input for font IC. This pin is the chip select input. (active LOW).
10	NC	Not connection

Absolute Maximum Ratings

Parameter	Symbol	Min	Max	Unit
Supply Voltage for input	VIN	2	7	V
Operating Temperature	TOP	-40	+80	°C
Storage Temperature	TSTG	-40	+85	°C

Electrical Characteristics

DC Electrical Characteristics

Item	Symbol	Condition	Min	Typ	Max	Unit
Supply Voltage for Input	VIN	—	2.8	3.0	5.2	V
Input High Volt.	VIH	—	0.8×VIN	—	VIN	V
Input Low Volt.	VIL	—	0	—	0.2×VIN	V
Output High Volt.	VOH	—	0.9×VIN	—	VIN	V
Output Low Volt.	VOL	—	0	—	0.1×VIN	V
50% Check Board operating Current	IIN	VIN=3V	—	13.0	26.0	mA