



WINSTAR Display Co.,Ltd.
華凌光電股份有限公司



Winstar Display Co., LTD

華凌光電股份有限公司



WEB: <https://www.winstar.com.tw> E-mail: sales@winstar.com.tw

SPECIFICATION

MODULE NO.: WF50BTIFGDHTX#

General Specifications

Item	Dimension	Unit
Size	5.0	inch
Dot Matrix	800 x 3(RGB) x 480	dots
Module dimension	120.7 x 75.8 x 23.0 (Max)	mm
Active area	108.0 x 64.8	mm
Dot pitch	0.045 x 0.135	mm
LCD type	TFT, Normally White, Transmissive	
View Direction	12 o'clock	
Gray Scale Inversion Direction	6 o'clock	
Aspect Ratio	16:9	
Backlight Type	LED, Normally White	
Controller IC	TFP401	
Interface	HDMI	
Touch Panel	Resistive touch panel , RTP (USB)	
Surface	Anti-Glare	

*Color tone slight changed by temperature and driving voltage.

Absolute Maximum Ratings

Item	Symbol	Min	Typ	Max	Unit
Operating Temperature	TOP	-20	-	+70	°C
Storage Temperature	TST	-30	-	+80	°C

Electrical Characteristics

Operating conditions

Item	Symbol	Condition	Min	Typ	Max	Unit
Supply Voltage For LCM	VDD	—	4.9	5	5.1	V
Supply Current For LCM	IDD	—	—	350	380	mA
LED life time	—	—	—	50,000	—	Hr

Interface

1. LCM PIN Definition(CON4/CON5)

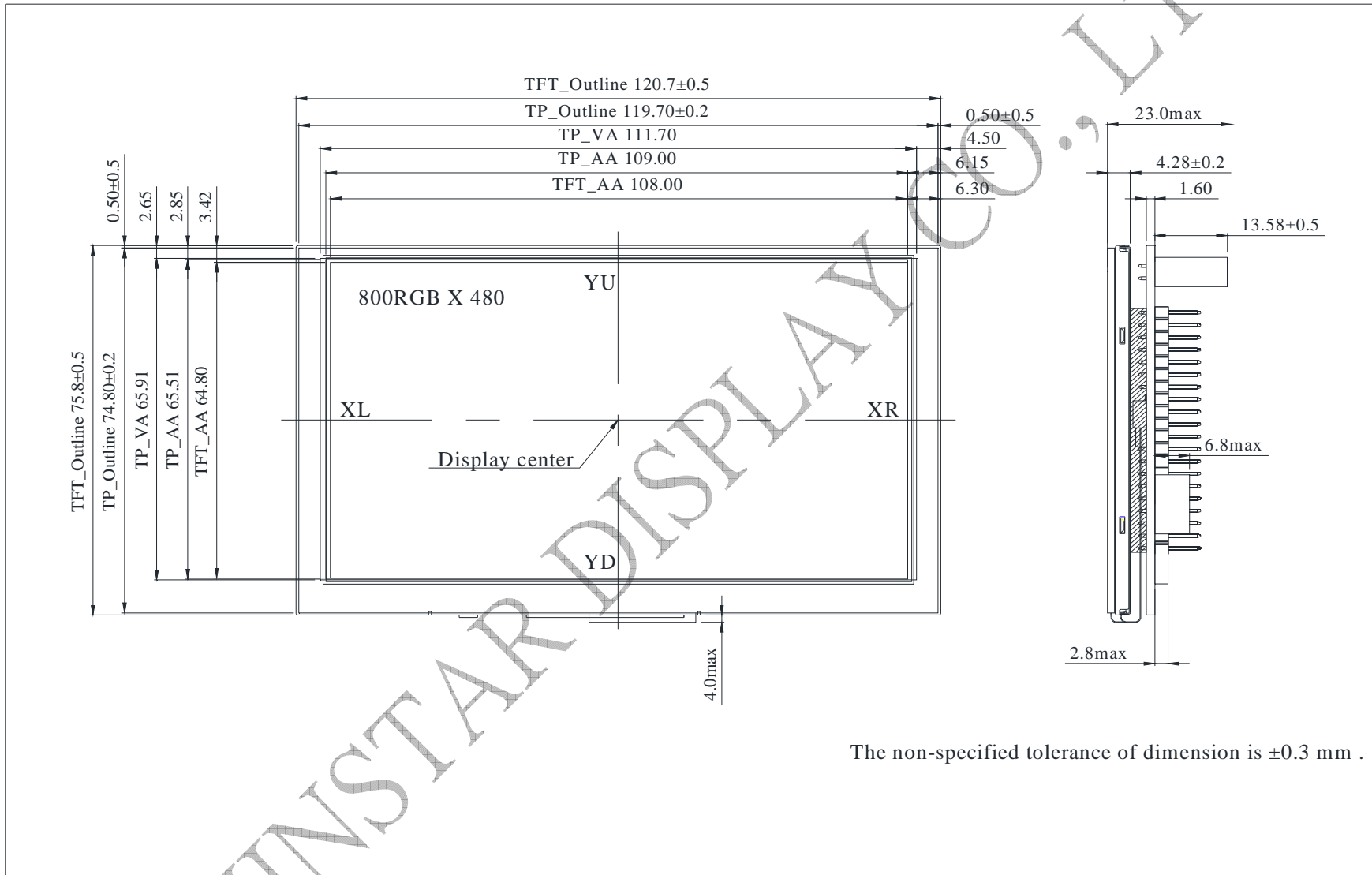
Pin	Symbol	Function
1	3.3V	Raspberry Pi:Power 3.3V
2	5V	Raspberry Pi:Power 5V
3	GPIO02	Raspberry Pi:GPIO02
4	5V	Raspberry Pi:Power 5V
5	GPIO03	Raspberry Pi:GPIO03
6	GND	Raspberry Pi:GND
7	GPIO04	Raspberry Pi:GPIO04
8	GPIO14	Raspberry Pi:GPIO14
9	GND	Raspberry Pi:GND
10	GPIO15	Raspberry Pi:GPIO15
11	GPIO17	Raspberry Pi:GPIO17
12	GPIO18	Raspberry Pi:GPIO18 (Backlight Enable)
13	GPIO27	Raspberry Pi:GPIO27
14	GND	Raspberry Pi:GND
15	GPIO22	Raspberry Pi:GPIO22
16	GPIO23	Raspberry Pi:GPIO23
17	3.3V	Raspberry Pi:3.3V
18	GPIO24	Raspberry Pi:GPIO24
19	GPIO10	Raspberry Pi:GPIO10
20	GND	Raspberry Pi:GND
21	GPIO09	Raspberry Pi:GPIO09
22	GPIO25	Raspberry Pi:GPIO25
23	GPIO11	Raspberry Pi:GPIO11
24	GPIO08	Raspberry Pi:GPIO08
25	GND	Raspberry Pi:GND
26	GPIO07	Raspberry Pi:GPIO07
27	ID_SD	Raspberry Pi:ID_SD
28	ID_SC	Raspberry Pi:ID_SC
29	GPIO05	Raspberry Pi:GPIO05
30	GND	Raspberry Pi:GND

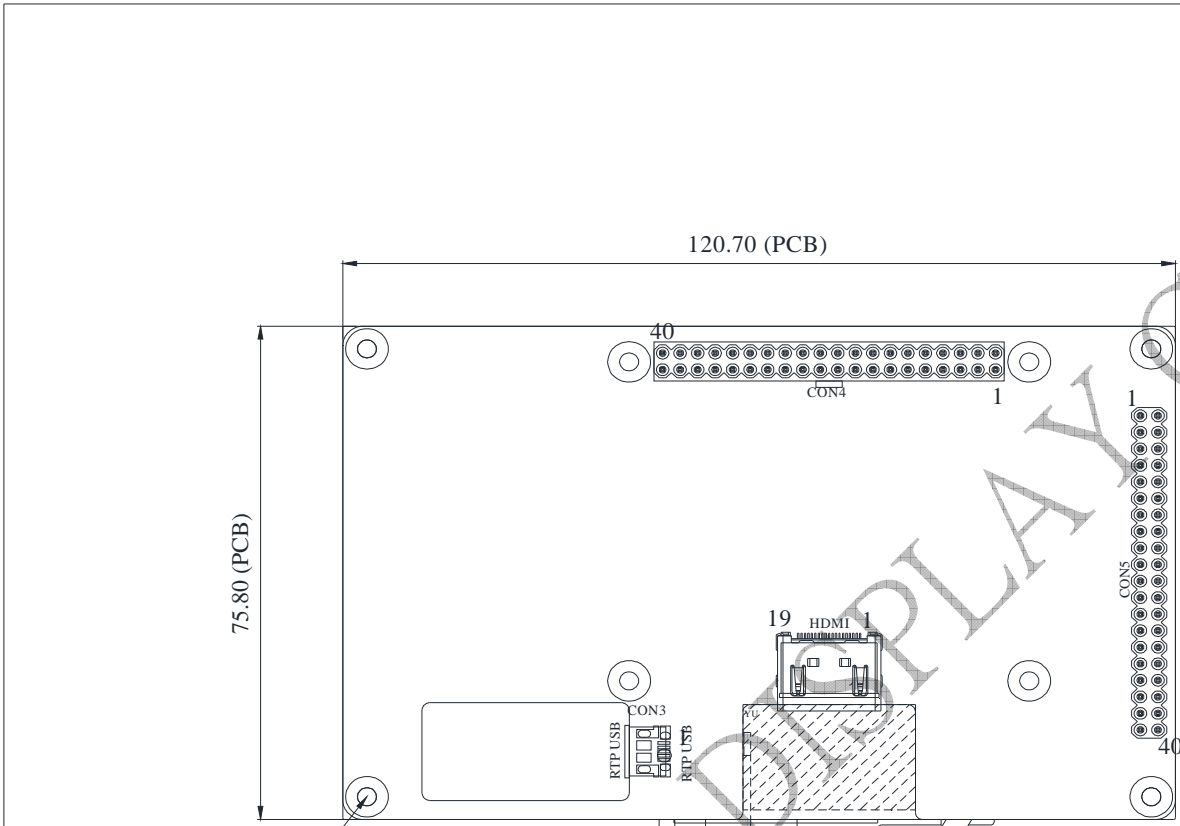
31	GPIO06	Raspberry Pi:GPIO06
32	GPIO12	Raspberry Pi:GPIO12
33	GPIO13	Raspberry Pi:GPIO13
34	GND	Raspberry Pi:GND
35	GPIO19	Raspberry Pi:GPIO19
36	GPIO16	Raspberry Pi:GPIO16
37	GPIO26	Raspberry Pi:GPIO26
38	GPIO20	Raspberry Pi:GPIO20
39	GND	Raspberry Pi:GND
40	GPIO21	Raspberry Pi:GPIO21

2. RTP USB PIN Definition(CON3)

Pin	Symbol	Function
1	5V	Power 5V
2	D-	Data line -
3	D+	Data line +
4	NC	No connection
5	GND	Power Ground

Contour Drawing





Pin	Symbol	Pin	Symbol
1	3.3V	21	GPIO09
2	5V	22	GPIO25
3	GPIO02	23	GPIO11
4	5V	24	GPIO08
5	GPIO03	25	GND
6	GND	26	GPIO07
7	GPIO04	27	ID_SD
8	GPIO14	28	ID_SC
9	GND	29	GPIO05
10	GPIO15	30	GND
11	GPIO17	31	GPIO06
12	GPIO18	32	GPIO12
13	GPIO27	33	GPIO13
14	GND	34	GND
15	GPIO22	35	GPIO19
16	GPIO23	36	GPIO16
17	3.3V	37	GPIO26
18	GPIO24	38	GPIO20
19	GPIO10	39	GND
20	GND	40	GPIO21

The non-specified tolerance of dimension is ± 0.3 mm .