



Taiwan, April, 2015

Welcome to read Winstar Newsletter issue no.79. In this issue, we will introduce Winstar standard 5.7" O Film TFT WF57E and the Custom Design Shaped LCD solution as well as the Winstar exhibition news of Del Mar Electronics in USA. Welcome to read the content thru the QR code on your cell phone.

QR Code - News issue no. 79

Exhibition News - Del Mar Electronics in CA, USA

Winstar Display will attend the 2015 Del Mar Electronics and Design Show in San Diego, CA which will take place from May 6th and May 7th, 2015. The Del Mar Electronics and Design Show is the premier event for those who design, manufacture such as automation equipment and OLED and LCD displays. This event is a great platform for presenting Winstar products and services to the USA market. Welcome to visit our booth and see what we demonstrate to you.

2015 Del Mar Electronic & Design Show

- ▶ Location: Del Mar Fairground, San Diego, CA,
 - ▶ Date: May 6th ~ May 7th, 2015
 - ▶ Hours: 10:00 am to 5:00 pm
 - ▶ Booth No.: Bing Crosby Hall 216
- <http://www.electroshows.com/>



**Del Mar Electronics
DMEDS
& Design Show**

Exposition & Seminar Program

May 6th, 2015 - 10 AM - 5 PM

May 7th, 2015 - 10 AM - 3 PM

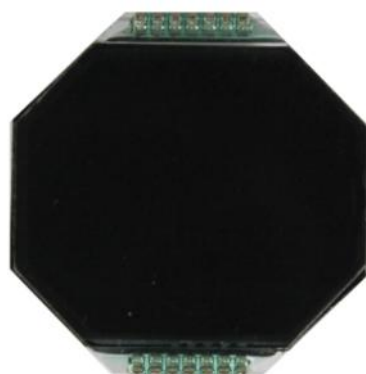
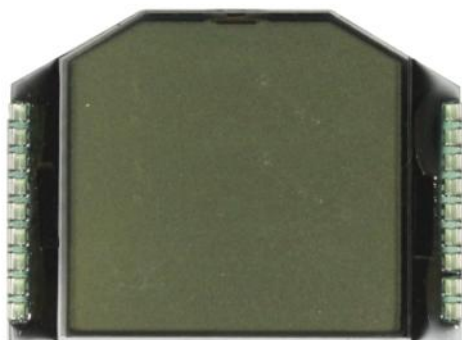
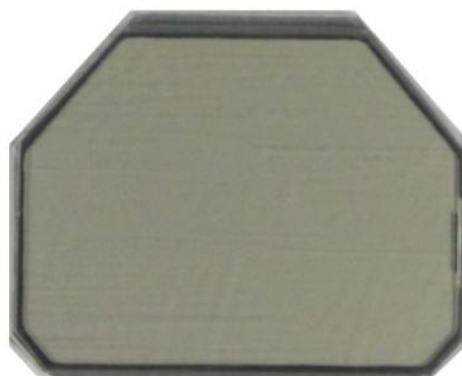
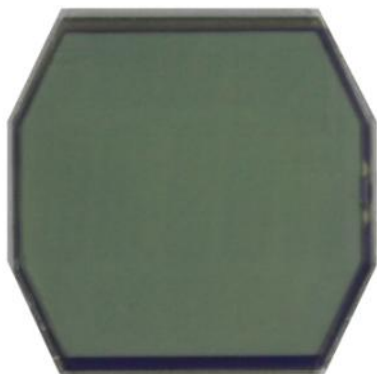
Del Mar Fairgrounds, San Diego, CA

Product Introduction: Custom Sharp LCD

Some customers have the requirement for Custom Sharp LCD solution. Winstar Display is able to design and produce the shaped LCDs for special applications. There is almost no limit for the sharp including quasi-circular or round-like and polygon of multi-sided sharps. Below photos are some examples as reference.

There are many pin out options for this LCD technology, such as metal pin, rubber or FPC pin out. The following is the examples of applications.

- ▶ Wrist watch, stopwatch
- ▶ Meter
- ▶ Automotive instrument
- ▶ Medical instrument

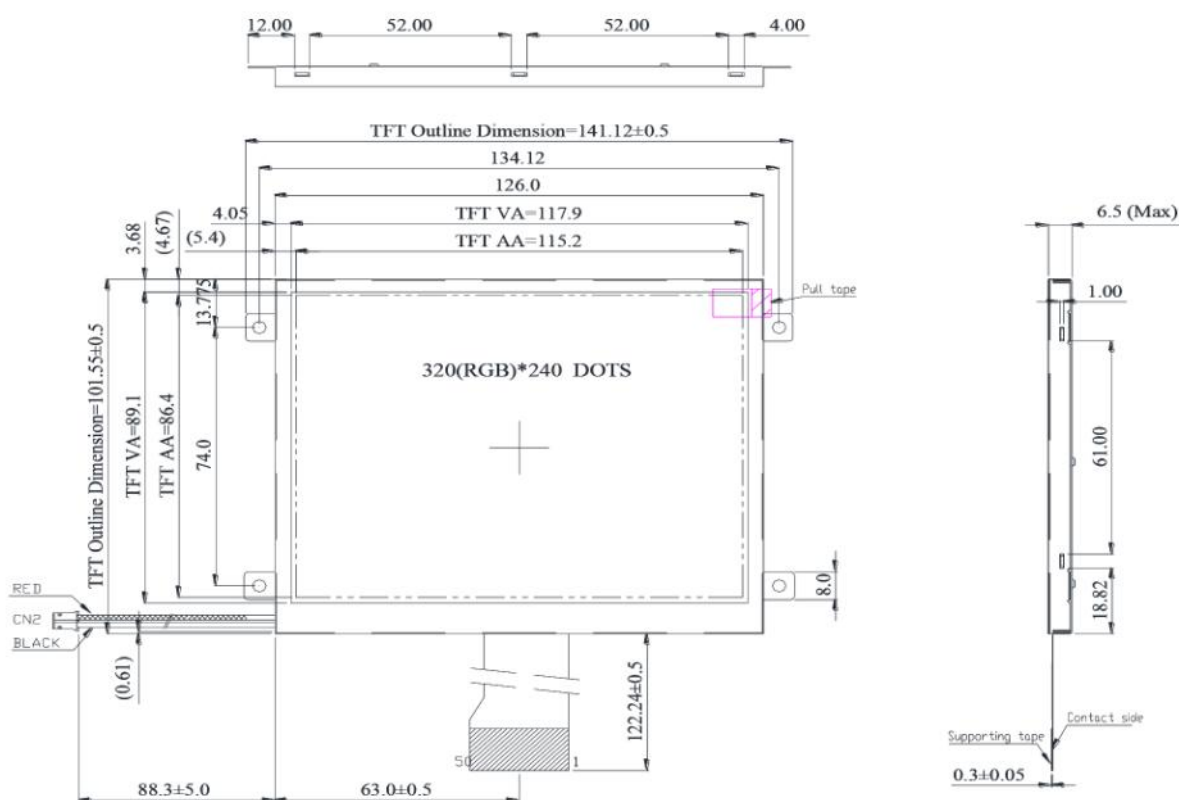


Product Introduction - TFT WF57E O-Film

In our previous Winstar News issue No. 76, we introduced the TFT wider view angle of O-Film technology and released 4.3" O-Film TFT WF43H model. In this issue, we will launch 5.7" O Film TFT WF57E. This display is with the module dimension of 141.12 x 101.55 mm and VA size of 115.2 x 86.4 mm. This TFT module can be operating at temperatures from -20°C to +70°C; its storage temperatures range from -30°C to +80°C.

Below is the basic specification of WF57E O Film TFT as reference. For any further information such as samples or quotation, please contact with our sales rep.

Item	Dimension
Size	5.7"
Dot Matrix	320 x RGBx240(TFT)
Module dimension	141.12 x 101.55 x 6.5 mm
Active area	115.2 x 86.40 mm
Dot pitch	0.12 x 0.36 mm
LCD type	TFT, Normally White, Transmissive
View Direction	12 o'clock
Gray Scale Inversion Direction	6 o'clock
Backlight Type	LED, Normally White
Touch Panel	Option
Surface	Anti-Glare



TFT View Direction v.s Gray Scale Inversion Direction

Many customers have the question regarding the “View Direction” and “Gray Scale Inversion Direction” on Winstar SPEC for TFT displays. The “view direction” on our TFT specification means that the view of display is the best from one of particular viewing angle. The TFT module “Gray scale inversion direction” is set by the TFT LCD panel was produced before it was added color filter and BEF.

It is well known that the TN-LCD TFT has the phenomenon called gray scale inversion. This means the display have one viewing side in which color of the image change suddenly after exceeding specified view angle. Therefore, the normal TFT models which the viewing angle are limited. But our O-Film TFT solution is available to improve direction issue and increase the view angle. Below are the drawings for the view direction and gray scale direction of O-Film TFT as comparison.

If you need further information about O-Film introduction, please see our previous newsletter issue No. 76.

