

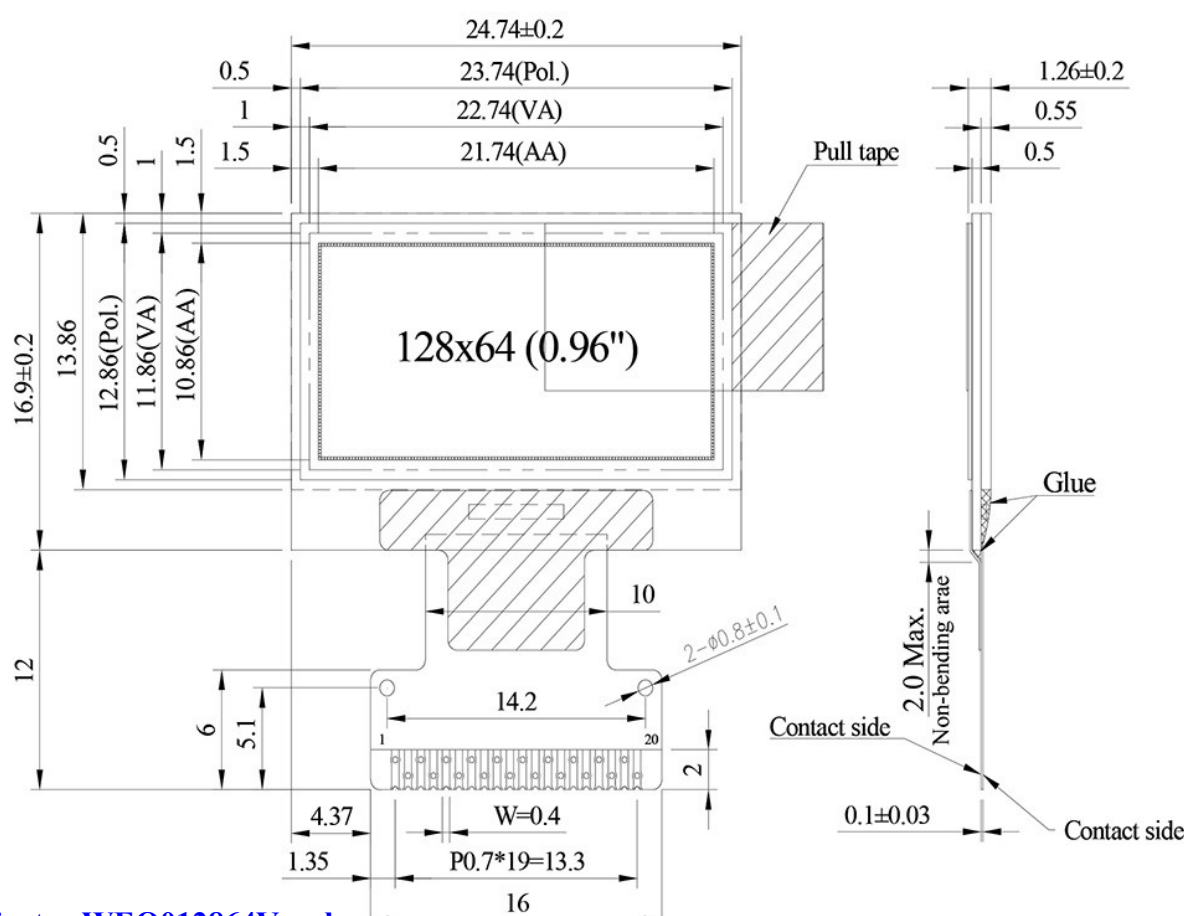
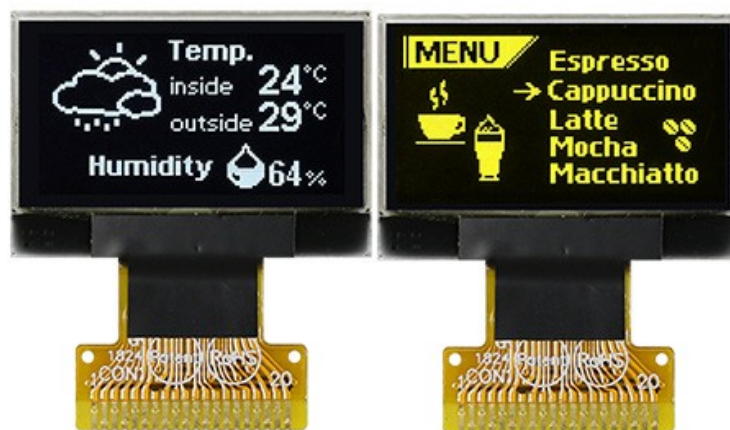
Nov. 2020

## 0.96" COG 128x64 OLED WEO012864V (Consumer grade)

WEO012864V is a 128x64 resolution COG graphic OLED display module, diagonal size 0.96 inch. The model is designed as consumer grade which is having the advantage of competitive price. The module is built-in with SSD1315 IC; it supports I2C and 3-wire /4-wire SPI serial interface. The supply voltage for logic is 3V, supply voltage for display is 7.5V, display with 50% check board current is 6mA @ 7.5Vcc (typical value), driving duty 1/64.

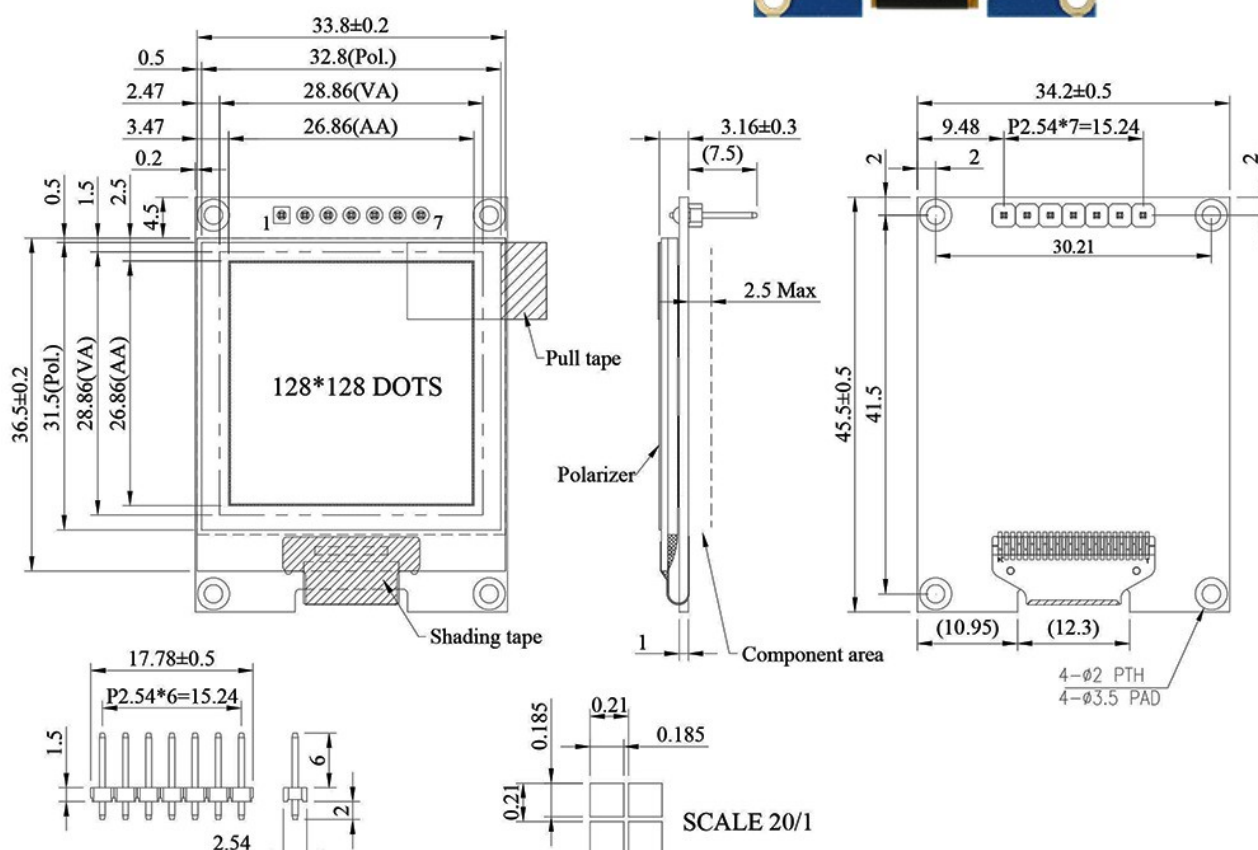
This 0.96 inch COG Graphic OLED module is suitable for wearable device, smart home applications and etc. This module can be operating at temperatures from -30°C to +70°C; its storage temperatures range from -30°C to +70°C.

WEO012864V	Dimension
Dot Matrix	128 x 64 Dots
Module dimension	24.74 x 16.90 x 1.26 mm
Active Area	21.74 x 10.86 mm
Pixel Size	0.15 x 0.15 mm
Pixel Pitch	0.17 x 0.17 mm
Display Mode	Passive Matrix
Display Color	White / Yellow
Drive Duty	1/64 Duty
IC	SSD1315
Interface	SPI, I2C
Size	0.96 inch



This OLED module is suitable for smart home application, medical device, smart control, meter, etc. WEA128128A module can be operating at temperatures from  $-40^{\circ}\text{C}$  to  $+80^{\circ}\text{C}$ ; its storage temperatures range from  $-40^{\circ}\text{C}$  to  $+85^{\circ}\text{C}$ .

WEA128128A	Dimension
Dot Matrix	128 x 128 Dots
Module dimension	34.2 x 45.5 x 3.16 mm
Active Area	26.86 x 26.86 mm
Pixel Size	0.185 x 0.185 mm
Pixel Pitch	0.210 x 0.210 mm
Display Mode	Passive Matrix
Display Color	White / Yellow /Sky Blue
Drive Duty	1/128 Duty
Gray Scale	4 bits
IC	SSD1327
Interface	4-Wire SPI, I2C optional
Size	1.5 inch

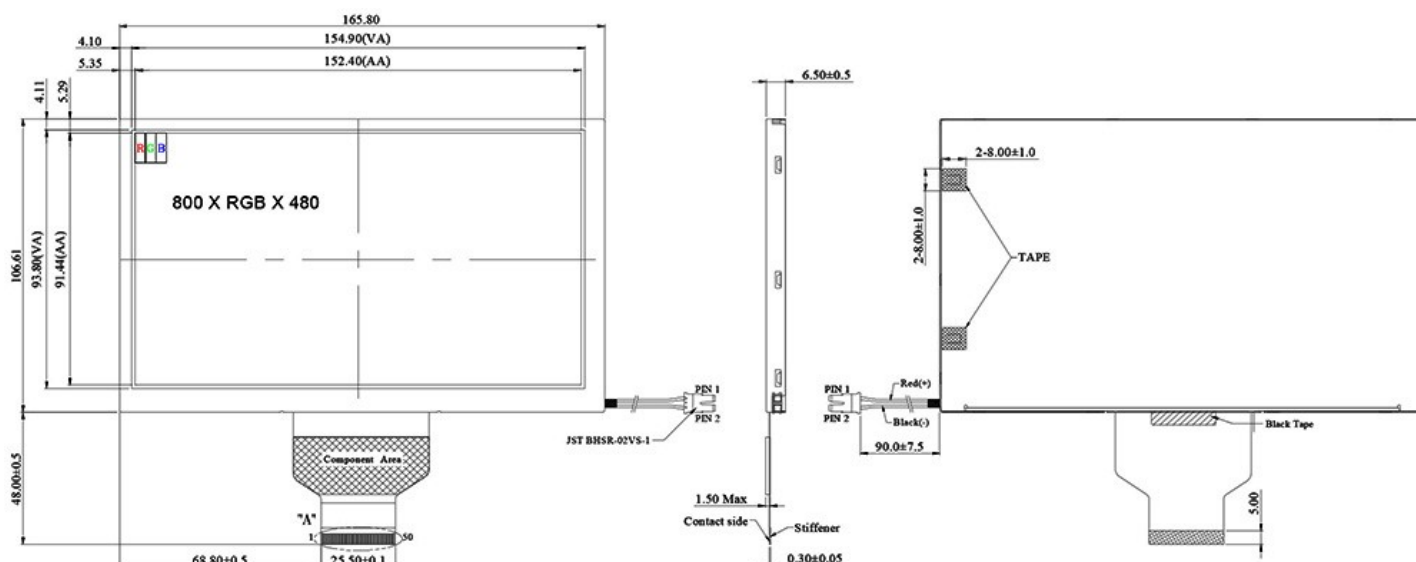


## 7" IPS 800x480 Wide Temp./High Brightness TFT WF70A9SWAGDNN0

WF70A9SWAGDNN0 is a High Brightness 7 inch IPS Wide Temperature TFT-LCD display, made of resolution 800x480 pixels. The module is built in with HX8249-A and HX8678-C driver ICs, it supports 24-bit RGB interface. WF70A9SWAGDNN0 is adopted IPS panel which is having the advantage of wider viewing angle of Left:80 / Right:80 / Up:80 / Down:80 degree (typical), contrast ratio 1000:1 (typical value), high brightness 1000 nits (typical value), anti-glare surface panel, aspect Ratio 15:9. This 7" IPS WF70A9 series have Resistive Touch Panel and Projected Capacitive Touch Panel for options. If customers don't need High Brightness, please choose WF70A9TWAGDNN0.

The supply voltage (VCC) of WF70A9SWAGDNN0 is from 2.7V to 3.6V, typical value 3.3V. It can be operating at temperatures from -30°C to +80°C and storage temperatures from -30°C to +80°C.

WF70A9SWAGDNN0	Dimension
Size	7 inch
Dot Matrix	800 x RGB x 480(TFT)
Module dimension	165.8 (W) x 106.61 (H) x 6.5(D) mm
Active area	152.40 x 91.44 mm
Pixel pitch	0.1905 x 0.1905 mm
LCD type	TFT, Normally Black, Transmissive
View Direction	80/80/80/80 IPS
TFT Interface	24-bit RGB
TFT Driver IC	HX8249-A + HX8678-C or Equivalent
Aspect Ratio	15:9
Backlight Type	LED, Normally White
Touch Panel	PCAP / RTP optional
Surface	Anti-Glare





## 7" Smart Display CAN Series TFT

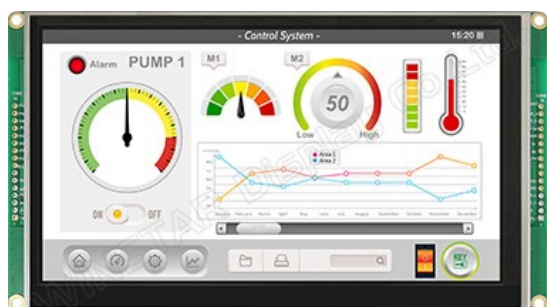
WL0F0007000A8GAAASA00 is a 7" Smart Display\_CAN series TFT which is defined as a slave device, that is controlled by master device via CAN bus command to render display content on the display screen and return touch event data with protocol objects. WL0F0007000A8GAAASA00 is integrated with a standard TFT module WF70A8TYAHLNG0 and 4-layers PCBA with built-in firmware. This 7" Smart Display \_CAN series TFT is an easy-to-use product which allows customers to develop projects rapidly in cost-effective way. This 7" Smart Display can use computer with USB2CAN dongle or Raspberry Pi interface (PiCAN2) as HOST platform. Below are the features of 7" smart display:

- ▶ DC 12V working voltage
- ▶ Power-On Self-Test & Splash screen.
- ▶ CAN bus Interface.
- ▶ Supports CANopen protocol, default baud rate at 250KB.
- ▶ Built in flash memory, storing the font and Object Dictionary Data.
- ▶ Supports projected capacitive touch screen (PCAP).
- ▶ Built-in Buzzer controlled by Master Device.

Winstar Smart Display CAN Series offers an out-of-the-box CANopen development experience that will lower your development costs and speed your time-to-market expectations.

The CanTFT comes with standard UI objects to get customers project off the ground quickly. If customers need custom UI objects support, our engineers are here to help. Send over your contents in PNG/JPG format, we will customize a new set of UI objects to you.

We provide below three kinds of demo scenarios for optional. For more details, please check our website.



• [WL0F0007000A8GAAASB00](#) (Industrial Application)



• [WL0F0007000A8GAAASC00](#) (Vehicle Application)



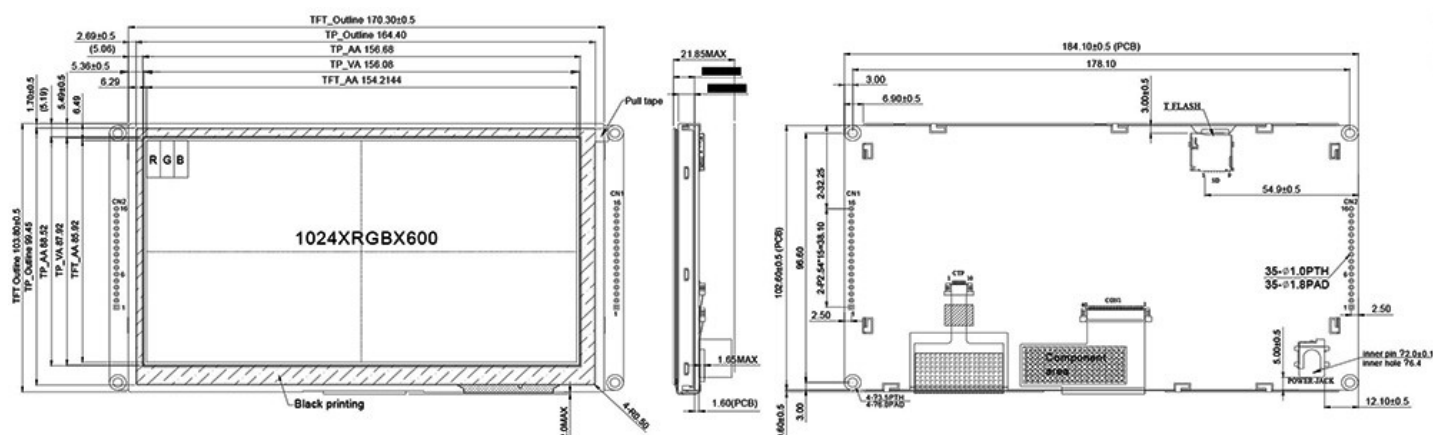
• [WL0F0007000A8GAAASD00](#) (Medical Application)

## Mechanical Data

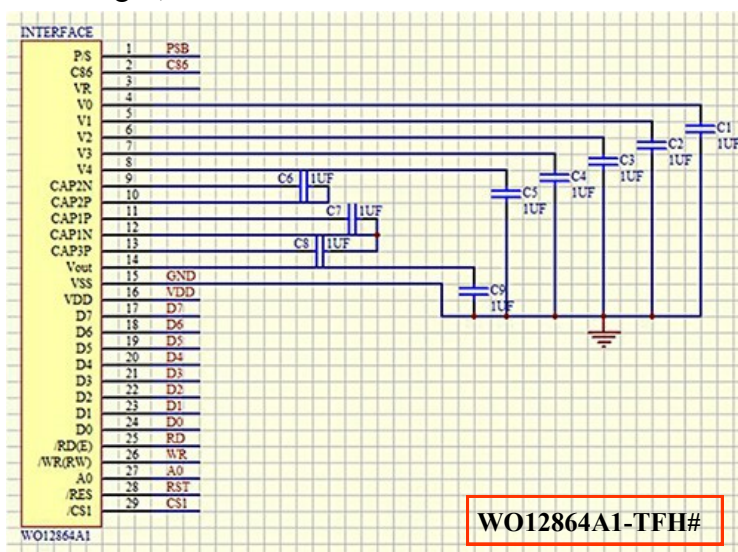
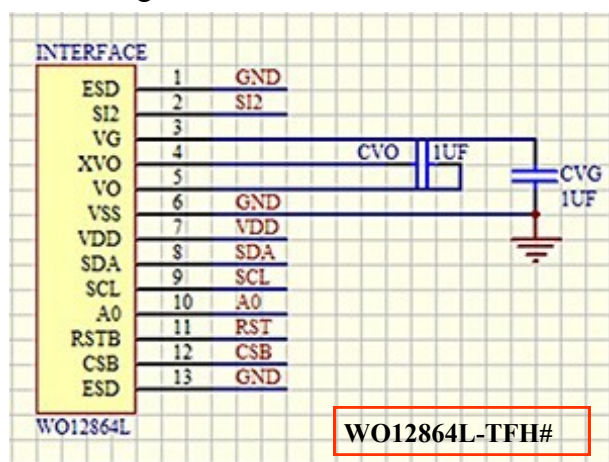
Item	Standard Value	Unit
LCD panel	169.9(W) x 103.4(H) x 5.6(D)	mm
PCB	184.1(W) x 102.6(H) x 1.6(D)	mm
Housing outline	184.1(W) x 102.6(H) x 21.85(D)	mm

## LCD Information

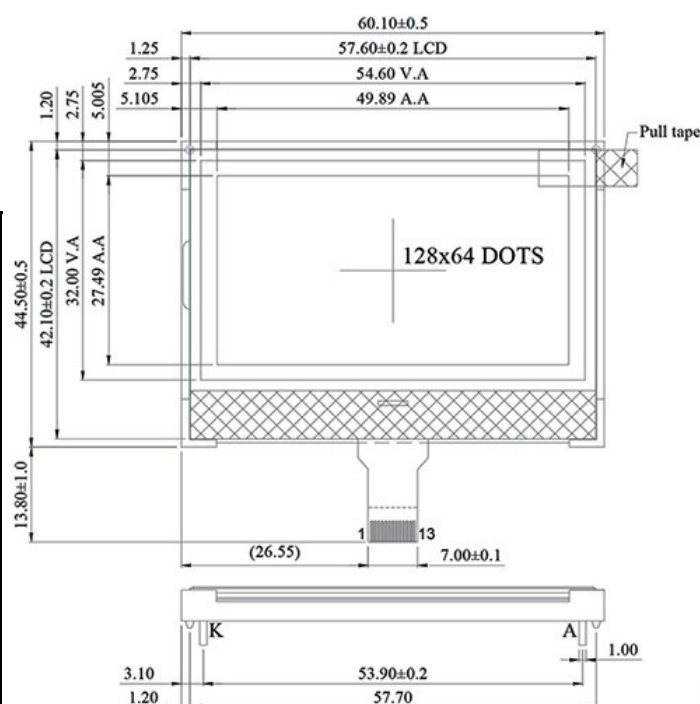
Item	Standard Value	Unit
Operating voltage	12	Vdc
Communication Interface	CAN bus differential $\pm 3.3$	Vpp
Size	7	inch
Dot Matrix	1024 x RGBx600(TFT)	dots
Module dimension	169.9(W) x 103.4(H) x 5.6(D)	mm
Active area	154.2144 x 85.92	mm
Dot pitch	0.1506 x 0.1432	mm
Backlight Type	LED, Normally White	
Viewing Angle	85/85/85/85	
Aspect Ratio	16:09	
Touch Panel	PCAP	
Surface	Glare	



The advantage of WO12864L is having the peripheral circuit design optimization. Below is the comparison of circuit designs of WO12864L and WO12864A1. For new designs, WO12864L is a better choice.



WO12864L-TFH	Dimension
Number of dots	128 x 64
Module dimension	60.10 x 44.50 x 5.01(Max) mm
View area	54.6 x 32.0 mm
Active area	49.89 x 27.49 mm
Dot size	0.36 x 0.40 mm
Dot pitch	0.39 x 0.43 mm
LCD type	FSTN Positive Transflective (Anti-glare)
Drive Method	1/65 DUTY, 1/9 BIAS
View direction	6 o'clock
Backlight Type	LED, White
IC	ST7567A (SPI & I2C)



► [Link to Winstar WO12864L web page](#)