

January, 2019



Chinese Lunar New Year Holiday Notice

Winstar Display Taiwan office, branches and China factories will be closed from February 2 thru February 10, 2019 for Chinese Lunar New Year Holiday. We will resume working on February 11, 2019. Please notice the below shipping date before and after the holiday. Please work with your Winstar sales persons closely before the holiday if your shipment might be affected. Thank you.

Below is the last shipping date and the first shipping date for this period as reference. We hope the Chinese new year of 2019 ahead bring you Happiness, Joy & Prosperity. Thank you.

Shipping From China

- ▶ Last shipping date: January 30, 2019
- ▶ First shipping date: February 11, 2019

Shipping From Taiwan

- ▶ Last shipping date: January 31, 2019
- ▶ First shipping date: February 11, 2019

Winstar Receives 2019 Taiwan Excellence Award

We are proud to announce that Winstar Display Co. receives 2019 Taiwan Excellence Award from Taiwan government institution. The Taiwan Excellence is an award that is delivered by the Ministry of Economic Affairs and Taiwan External Trade Development Council (TAITRA) to encourage Taiwan industries to upgrade and incorporate Innovalues into their products. Winstar OLED products received 6 years of Taiwan Excellence Awards, that's making us the best PMOLED manufacturer in Taiwan which has won this award for six years.

Winstar Mini OLED 0.66" WEO006448A rewarded as 2019 Taiwan Excellence product, it is a powerful product featuring all the OLED superior properties, this mini OLED has significant superiority over other displays.

Taiwan Excellence is the highest accolade awarded to products that encapsulate Innovalues. This Award selection is based on four different criteria: R&D, Design, Quality, and Marketing. Winstar Display OLED products are innovative and superior in terms of performance, quality, and design; and the products that have been honored with the year of 2011, 2012, 2014, 2017, 2018 and 2019 Taiwan Excellence Award. These Awards are the greatest testimony to our product development, design ability, and business performance of Winstar Display products. Welcome to watch the video of Winstar 0.66" WEO006448A OLED introduction on YouTube.



TAIWAN
EXCELLENCE
2019

Micro OLED Display Module

64x48 dots



Shipping Address for RMA Return Goods to Taiwan

Winstar RMA office is not in our headquarters office which is located in another building in Central Taiwan Science Park of Taiwan. For RMA return goods, please contact your Winstar sales persons before shipping in order to receive a Return Material Authorization (RMA) number. The RMA goods, please send to the below address from February 14, 2019.

RMA Address: 2F, No.25, Keya Rd., Daya Dist., Taichung City 428, Taiwan

Recipient: please mark: "Winstar RMA Center"

Please mark "RMA" number on carton.

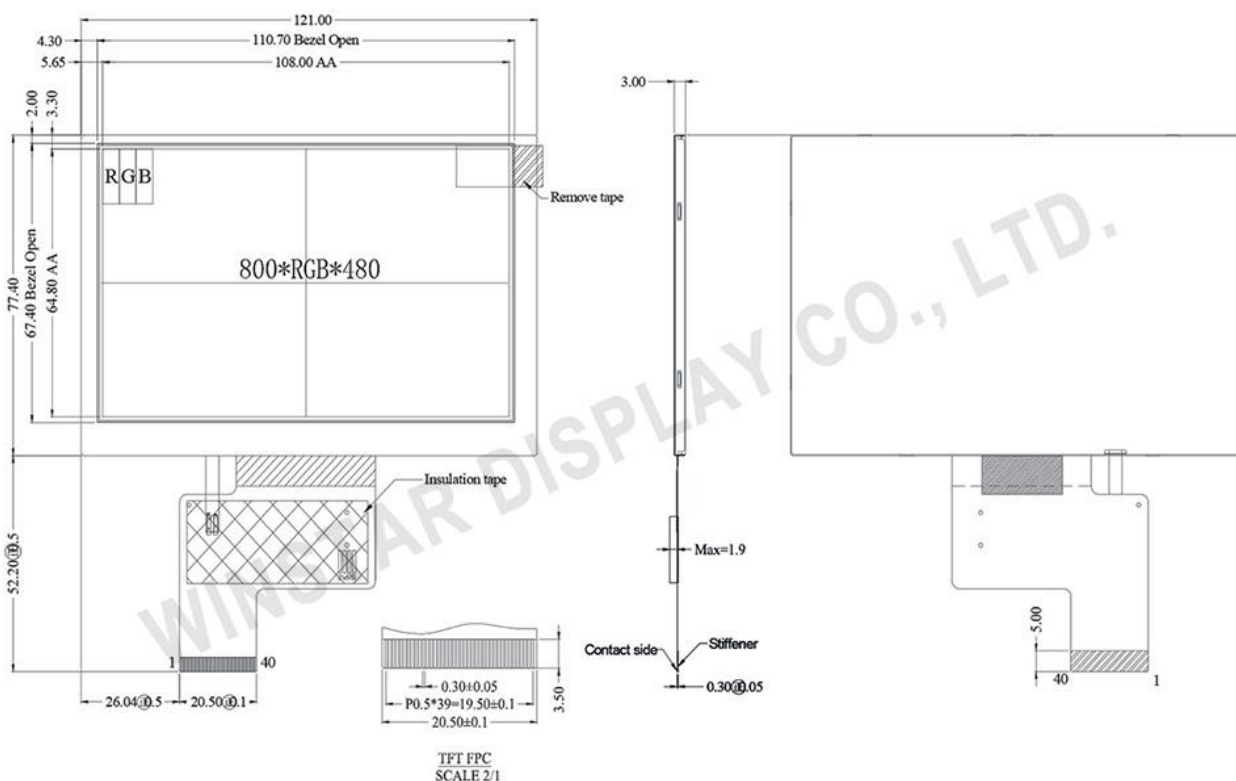
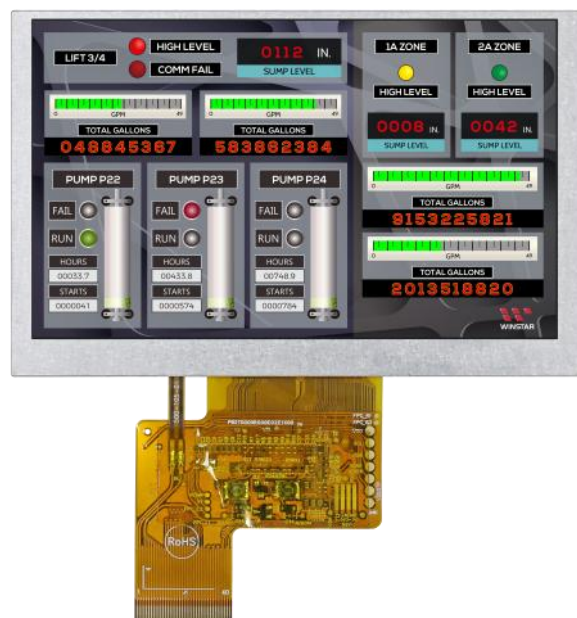


5" IPS Wide Temp. TFT-LCD WF50ETWAGDNN0

WF50ETWAGDNN0 is a 5 inch Wide Temperature TFT display with IPS great angle-visibility. This IPS TFT display is featured with resolution 800x480 pixels and built in with HX8249-A source driver IC and HX8678-C gate driver IC; it supports RGB-24bit interface, with brightness 500 nits (typical value), aspect ratio 16:9, contrast ratio 1000 (typical value).

This 5 inch IPS TFT-LCD is an IPS (In-Plane Switching) Panel which having the advantages of wider viewing angle of Left:85 / Right:85 / Up:85 / Down:85 degree (typical). WF50ETWAGDNN0 module can be operating at temperatures from -30°C to +80°C; its storage temperatures range from -30°C to +80°C.

WF50ETWAGDNN0	Dimension
Size	5 inch
Dot Matrix	800× 3(RGB) × 480
Module Dimension	121.0×77.4 ×3.0 mm
Active area	108(W) ×64.8 (H) mm
Dot Pitch	0.045(W) ×0.135(H) mm
LCD Type	TFT, Normally Black, Transmissive
View Direction	85/85/85/85 (IPS)
Aspect Ratio	16:9
TFT Driver IC	HX8249-A+ HX8678-C
TFT Interface	RGB-24bit
Backlight Type	LED, Normally White
Brightness	500 nits (typical value)
Touch Panel	Without Touch Panel
Surface	Anti-Glare



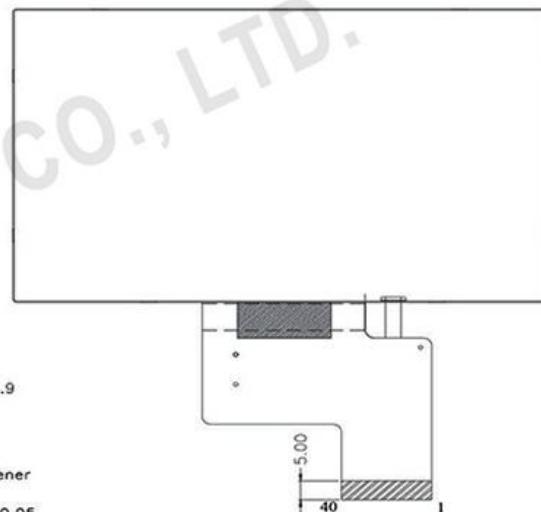
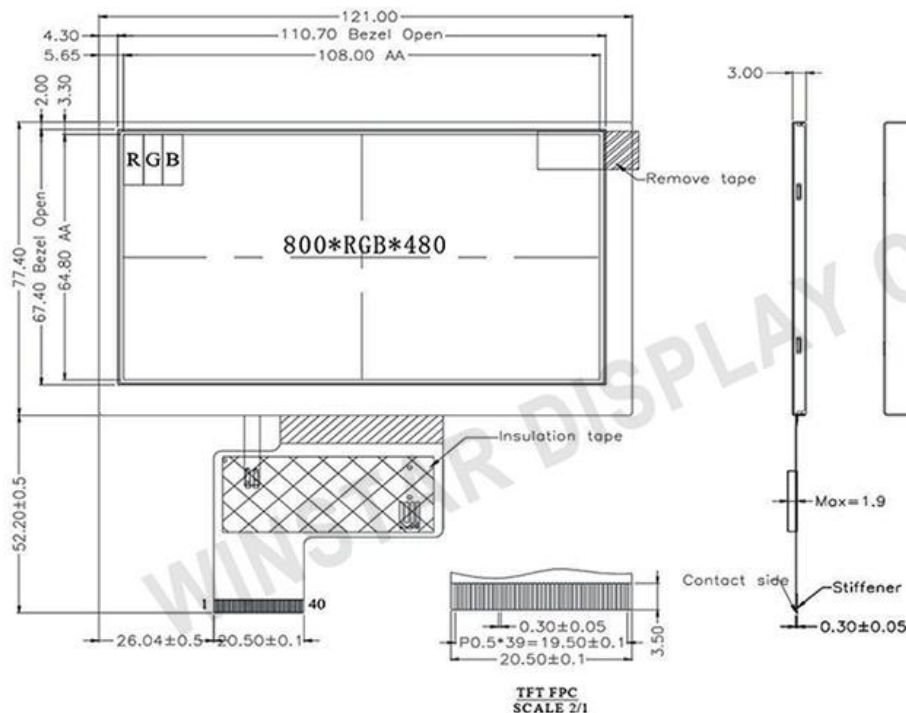
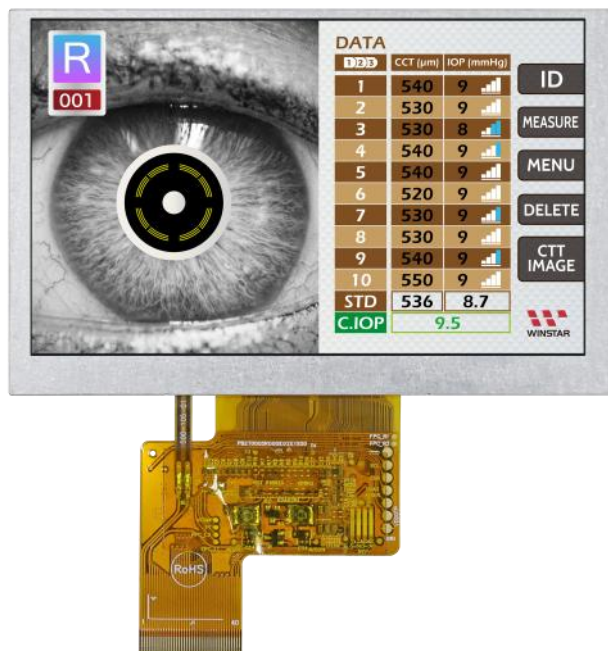


5" IPS High Brightness / Wider Temp. TFT WF50ESWAGDNN0

WF50ESWAGDNN0 is a 5 inch IPS TFT-LCD module with super high brightness and wider operating temperature, resolution 800x480 pixels. This IPS TFT-LCD is built in with HX8249-A Source Driver IC and HX8678-C Gate driver IC; it supports RGB-24bit interface, with high brightness 1000 nits (typical value), aspect ratio 16:9, contrast ratio 1000 (typical value), Anti-Glare surface glass.

This 5 inch IPS TFT-LCD is an IPS (In-Plane Switching) Panel which having the advantages of great angle-visibility of Left:85 / Right:85 / Up:85 / Down:85 degree (typical). WF50ESWAGDNN0 module can be operating at temperatures from -30°C to +80°C; its storage temperatures range from -30°C to +80°C. It is very suitable for outdoor applications.

WF50ESWAGDNN0	Dimension
Size	5 inch
Dot Matrix	800× 3(RGB) × 480
Module dimension	121.0×77.4 ×3.0 mm
Active area	108(W) ×64.8 (H) mm
Dot pitch	0.045(W) ×0.135(H) mm
LCD type	TFT, Normally Black, Transmissive
View Direction	85/85/85/85 (IPS)
Aspect Ratio	16:9
TFT Driver IC	HX8249-A+ HX8678-C
TFT Interface	RGB-24bit
Backlight Type	LED, Normally White
Brightness	1000 nits (typical value)
Touch Panel	Without Touch Panel
Surface	Anti-Glare



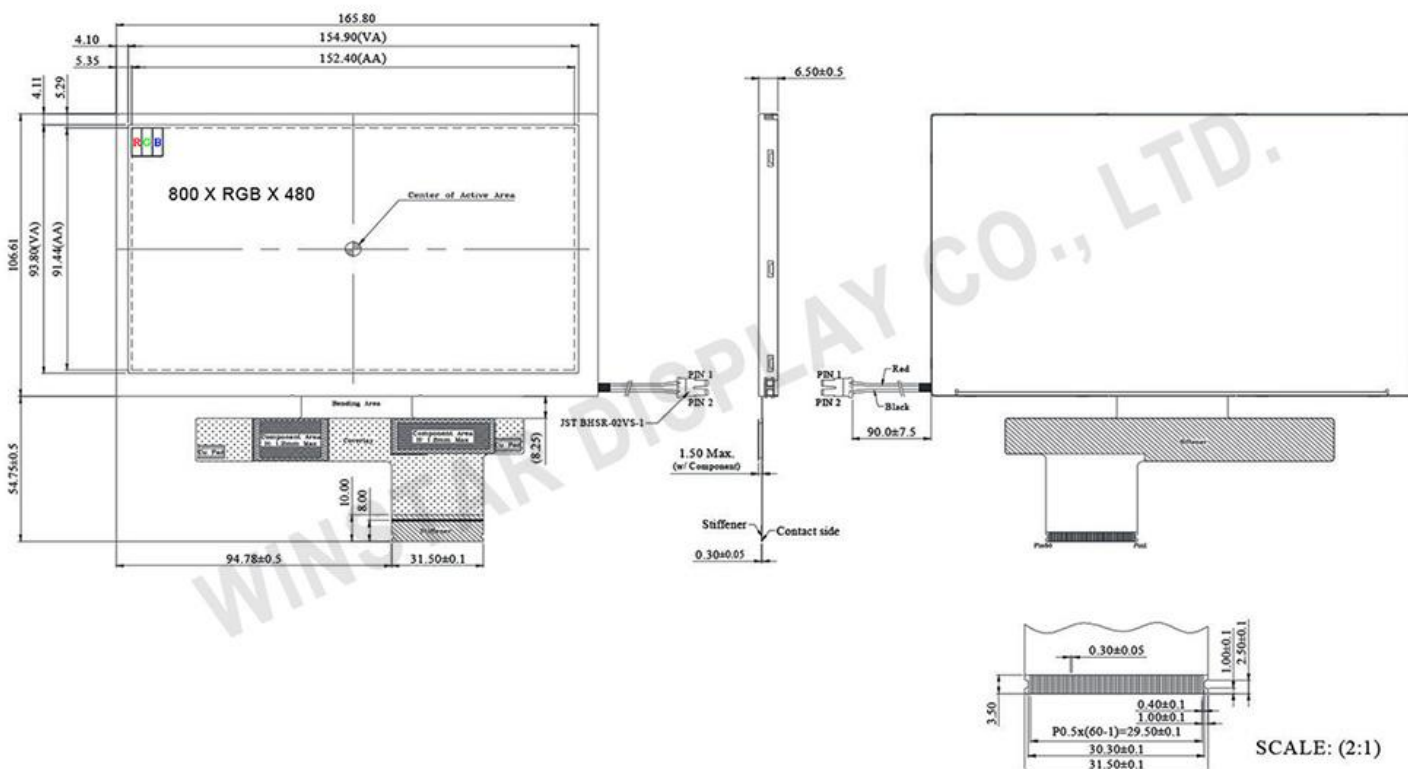
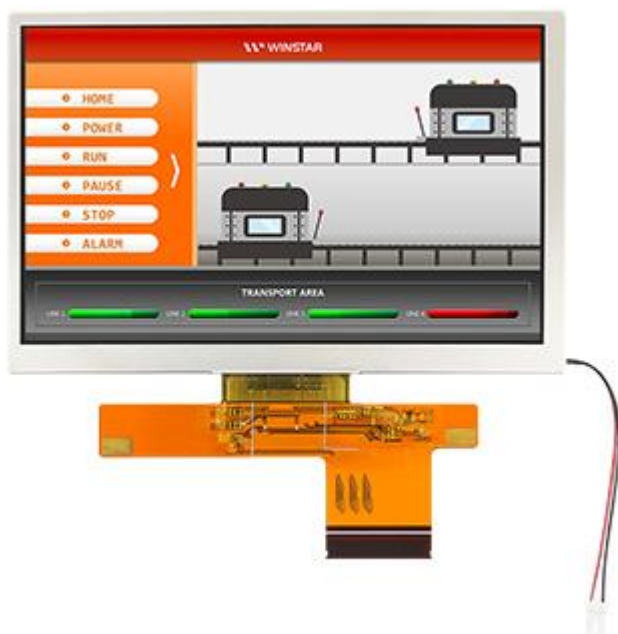


7" IPS High Brightness/Wide Temp. TFT WF70A4SWAGDNN0

WF70A4SWAGDNN0 is a 7 inch super-bright, wider operating temperatures IPS TFT LCD module, with WVGA 800x480 pixels. This TFT model is built in with NT51632T and NT52601TT driver IC, it supports 24-bit RGB interface, brightness 1000 nits (typical value).

This 7" IPS TFT has a wider viewing angle than TN TFT, the view angle is Left:85 / Right:85 / Up:85 / Down:85 degree (typical value). The supply voltage for logic (VCC) of WF70A4SWAGDNN0 is from 3.0V to 3.6V, typical value 3.3V, Glare 3H surface LCD, aspect ratio 16:9, contrast ratio 1000 (typical value). It can be operating at temperatures from -30°C to +80 °C and storage temperatures from -40°C to +90 °C.

WF70A4SWAGDNN0	Dimension
Size	7 inch
Dot Matrix	800 x RGB x 480(TFT)
Module Dimension	165.8 x 106.61 x 6.5 mm
Active Area	152.40 x 91.44 mm
Dot Pitch	0.1905 x 0.1905 mm
LCD type	TFT, Normally Black, Transmissive
TFT Interface	24-bit RGB
TFT Driver IC	NT51632T + NT52601TT
View Direction	85/85/85/85
Aspect Ratio	16:9
Backlight Type	LED, Normally White
Touch Panel	Touch Panel
Surface	Glare, 3H



SCALE: (2:1)