

Dec, 2018



Shipping Arrangement before Stocktaking & Holiday Notice

Winstar Display will have annual stocktaking from December 26 thru 28, 2018 for the Taiwan and China plants. Please note that all the shipping arrangement during this period will be forbidden. Our ERP system will be closed for stocktaking from December 25 thru 28, 2018. The New Year Holiday is from December 29 thru January 2, 2019; we will return to work on January 2, 2019. Please notice the shipping date before and after holiday and our annual stocktaking.

Below is the last shipping date and the first shipping date for this period as reference. Please work with Winstar sales persons closely before the stocktaking and holiday if your shipment might be affected. Thank you.

Shipping From China

- ▶ Last shipping date: December 25, 2018
- ▶ First shipping date: January 2, 2019

Shipping From Taiwan

- ▶ Last shipping date: December 25, 2018
- ▶ First shipping date: January 2, 2019



Chunghwa Picture Tubes Co. Ltd (CPT) - TFT Panel EOL Notice

We are sorry to inform customers this emergent notice that Chunghwa Picture Tubes Ltd. (CPT) on Friday Dec. 14, 2018 announced the sudden suspension of production at two factories without prior notice. CPT has financial stress causes sudden shutdown of factories in Taoyuan, Taiwan and discontinue manufacture in production, Winstar Co. forced to make this TFT Panel EOL notice, we are sorry but this is not what we can expected in advance. We will try our best to provide alternative plan and schedule as soon as possible. Also, Winstar will do our best to buy CPT TFT panel already stock in the market.

Affected Items:

TFT Series: WF43H, WF43M, WF43P, WF43Q, WF70B, WF70W, WJ43D, WJ43L, WJ43N, WJ70A, WJ70N, WF102D, WF103B

Recommend Action :

We strongly recommend customers to place last buy order for the above affected items. Winstar is preparing the alternative plan and will provide detail information around Dec. 21, 2018.

Last Order Date : Dec. 20, 2018

Remark: Since CPT already discontinued business, we cannot guarantee your last order quantity will be fulfilled. We will do our best to buy CPT TFT panel stock in the market. But your order will be proceeded at the first priority.

Last Shipment Date : June 30, 2019

This is an issue to almost module manufacturers who use CPT TFT panel not only to Winstar Display. We need our customers' understanding and cooperation to the above captioned issue. Thank you in advance. If there have further questions, please feel free to contact our sales persons or via sales@winstar.com.tw. Thank you.

Best regards,

A handwritten signature in black ink, appearing to be "John Lin", with a long horizontal stroke extending to the right.

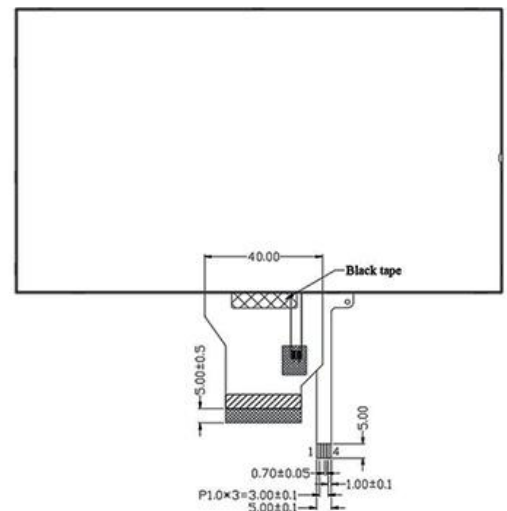
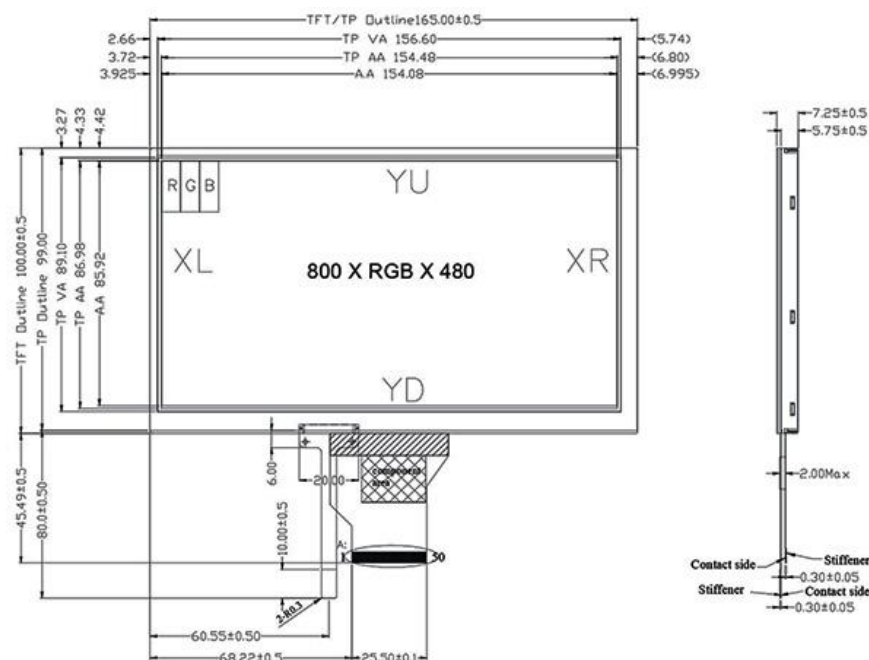
John Lin
Vice President of Sales Dept.
WINSTAR Display Co., Ltd.

7 " TFT WF70A2SIAGDNT0 with Resistive Touchscreen

WF70A2SIAGDNT0 is a 7 inch High Brightness TFT LCD module with Resistive Touch Panel (RTP), resolution WVGA 800x480 pixels. This TFT model is built in with ST-5623 source driver IC and ST-5091 gate driver IC with high brightness 600 nits (typical value). WF70A2 model supports RGB interface.

The supply voltage for logic (VCC) of WF70A2SIAGDNT0 is from 3.0V to 3.6V, typical value 3.3V, Anti-Glare surface panel, View Direction 12 o'clock, Gray scale inversion 6 o'clock, and aspect ratio 16:9, contrast ratio 800 (typical value). It can be operating at temperatures from -20°C to +70 °C and storage temperatures from -30 to +80 °C.

WF70A2SIAGDNT0	Dimension
Size	7 inch
Dot Matrix	800 × RGB × 480 (TFT)
Module dimension	165 × 100.0 × 7.25 mm
Active area	154.08 × 85.92 mm
Pixel Pitch	0.1926 × 0.179 mm
LCD type	TFT, Normally White, Transmissive
View Direction	12 o'clock
Gray Scale Inversion Direction	6 o'clock
Aspect Ratio	16:9
Backlight Type	LED, Normally White
Color arrangement	RGB-STRIPE
Driver IC	Source IC: ST-5623D, Gate IC: ST5091D
Touch Panel	With RTP
Surface	Anti-Glare

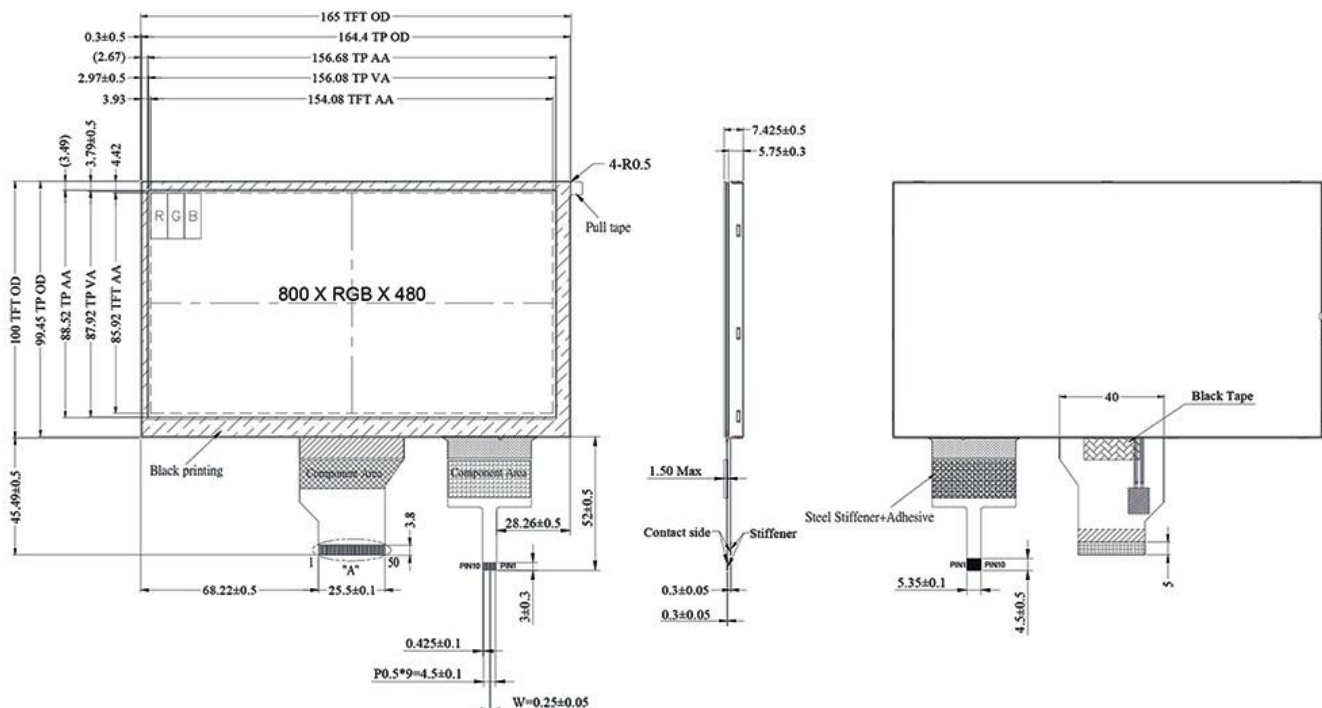
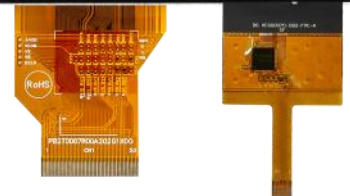


7 Inch TFT-LCD WF70A2SIAGDNG0 with PCAP

WF70A2SIAGDNG0 is a High Brightness TFT LCD module with Projected Capacitive Touch Panel (PCAP), resolution WVGA 800x480 pixels, diagonal size 7 inch. This TFT model is built in with ST-5623 source driver IC and ST-5091 gate driver IC with high brightness 700 nits (typical value). WF70A2 TFT model supports RGB interface, the PCAP touch screen IC is FT5426 which supports I2C interface.

The supply voltage for logic (VCC) of WF70A2SIAGDNG0 is from 3.0V to 3.6V, typical value 3.3V, Glare surface panel, View Direction 12 o'clock, Gray scale inversion 6 o'clock, and aspect ratio 16:9, contrast ratio 800 (typical value). It can be operating at temperatures from -20°C to $+70^{\circ}\text{C}$ and storage temperatures from -30 to $+80^{\circ}\text{C}$. This WF70A2SIAGDNG0 is very suitable for outdoor applications, for example, outdoor measuring equipment, and GPS Navigation system.

WF70A2SIAGDNG0	Dimension
Size	7 inch
Dot Matrix	800 × RGB × 480 (TFT)
Module dimension	165 × 100.0 × 7.425
Active area	154.08 × 85.92
Pixel Pitch	0.1926 × 0.179
LCD type	TFT, Normally White, Transmissive
View Direction	12 o'clock
Gray Scale Inversion Direction	6 o'clock
Aspect Ratio	16:9
Backlight Type	LED, Normally White
Color arrangement	RGB-STRIFE
Driver IC	Source IC: ST-5623D, Gate IC: ST5091D
PCAP IC	FT5426 or Equivalent
PCAP Interface	I2C
PCAP FW Version:	V03
Touch Screen	With PCAP
Surface	Glare



WF52A Bar TFT Series Selection Guide and Applications Introduction

Winstar Bar Type TFT is a new rising star for many applications, These Bar TFT displays are a perfect choice to apply in: 1U/2U server, audio system and advertising display, automotive, aviation, marine systems, security equipment, Industrial equipment, outdoor intercom systems and control panels, medical equipment. Here is the Quick Selection Guide for Winstar released 5.2" WF52A and application examples for your reference.

Picture	Model No.	Description	Interface	Controller	Touch Screen
	WF52ATLASDNN0	5.2" Bar TFT Panel Brightness 500 nits	RGB	No	No
	WF52ATLASDNT0	5.2" Bar TFT Panel Brightness 350 nits with RTP touch panel	RGB	No	RTP
	WF52ATLASDNG0	5.2" Bar TFT Panel Brightness 400 nits with PCAP touch panel	RGB	No	PCAP
	WF52ATZASDNN0	5.2" Bar TFT Panel Brightness 400 nits with O-Film technology	RGB	No	No
	WF52ATZASDNG0	5.2" Bar TFT Panel with O-Film on panel Brightness 350 nits with PCAP touch panel.	RGB	No	PCAP
	WF52ASZASDNN0	5.2" Bar TFT Panel High brightness 800~850 nits, with O-Film on panel having wider viewing angle	RGB	No	No
	WF52ASZASDNG0	5.2" Bar TFT Panel High brightness 700 nits, O-Film with PCAP touch panel.	RGB	No	PCAP
	WF52ASLASDNN0	5.2" Bar TFT Panel High brightness 1100 nits	RGB	No	No
	WF52ASLASDNG0	5.2" Bar TFT Panel High brightness 880 nits with PCAP touch panel.	RGB	No	PCAP



5.2" Bar TFT LCD Display

WF52A Series

► [Link to Winstar WF52A web page](#)