



April, 2018

Exhibition News: DMEMS 2018 in USA

Winstar Display will present a full range of display technology highlights on its booth No.642 at the Del Mar Electronics & Manufacturing Show in San Diego, CA. This Expo will be held from May 2nd to May 3rd, 2018 in Del Mar Fairgrounds. The booth will contain live demonstrations of our solution areas for TFT displays, OLED displays, LCD displays and Custom design. You are more than welcome to visit the Winstar booth at the DMEMS 2018 exhibition to learn more about the latest innovations on show and our wide range of alternative display solutions. Look forward to seeing you there on booth no. 642.

Del Mar Electronics & Manufacturing Show 2018

- ▶ Date : May 2~3, 2018
- ▶ Location : Del Mar Fairgrounds, San Diego, CA
- ▶ Booth No. #642
- ▶ www.manufacturing.show



Display / Design / Solution

12,000+ PRODUCTS 20 YEARS+ EXPERIENCE

LCD OLED TFT Embedded

WINSTAR Display
WH1602B1 4-SP1

PUL 86 min

WINSTAR
OLED

READY TO SERVICE

POS SYSTEM

Notice: PCB Upgrade Version for WH1602B/WHZ1602B & WH1602K series

Winstar is going to upgrade the PCB board for all WH1602B and WH1602K series running change from September, 2018. We redesigned the PCB circuit layout for having better performance. The mechanical outline size and the electrical characters for new version PCB and the existing one are the same, but the layout will look different in appearance. The upgraded PCB version will improve many aspects performance as below:

1. Improved ESD protection: add ground jumpers for bezel (frame)/ mounting hole.
2. For those using RW1603 IC modules, customers can select 8bit/4bit SPI/I2C interface function by changing jumper.
3. Add decoupling capacitor: it filters out a certain frequency or range of frequencies from a circuit which will improve the LCD modules stability.
4. Increase VOP internal adjustment circuit.

Affected Items:

All WH1602B series, WH1602B1 series, WH1602B3 series, WHZ1602B series, WH1602K series LCD modules.

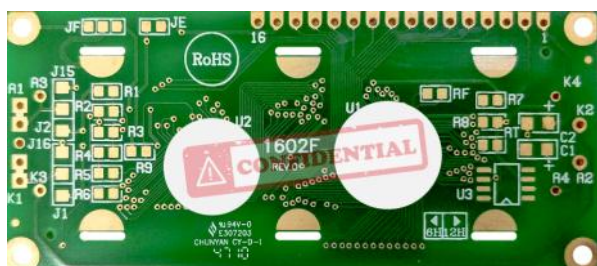
Schedule:

Running change from September 2018.

Appearance:

PCB circuit layouts will be optimized and re-designed, the appearance will be different. Please see below comparison photos:

Existing PCB backside: Two versions

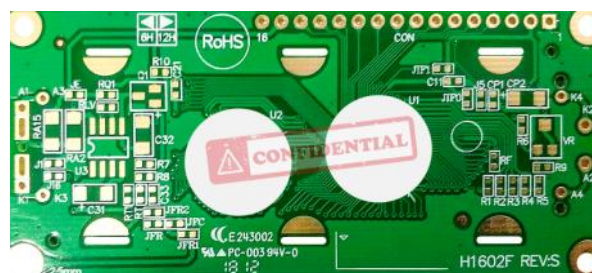


FS-0 version



FS-1 version

New PCB - back side:



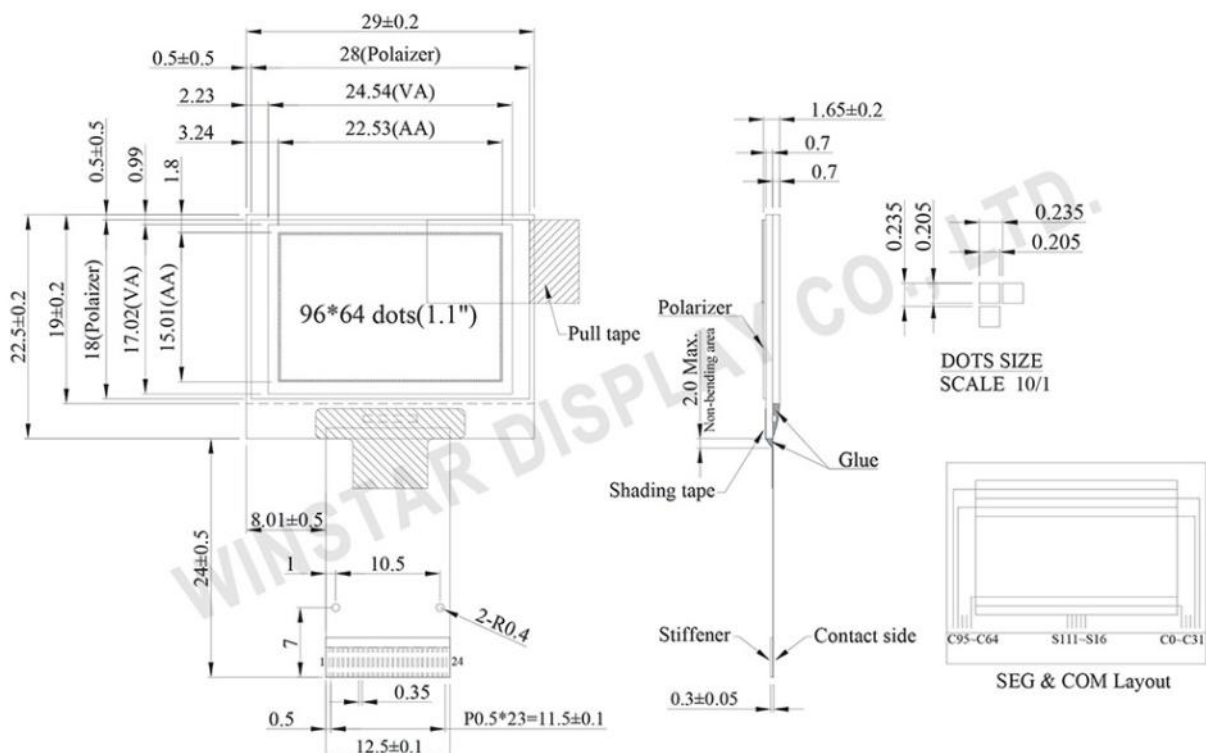
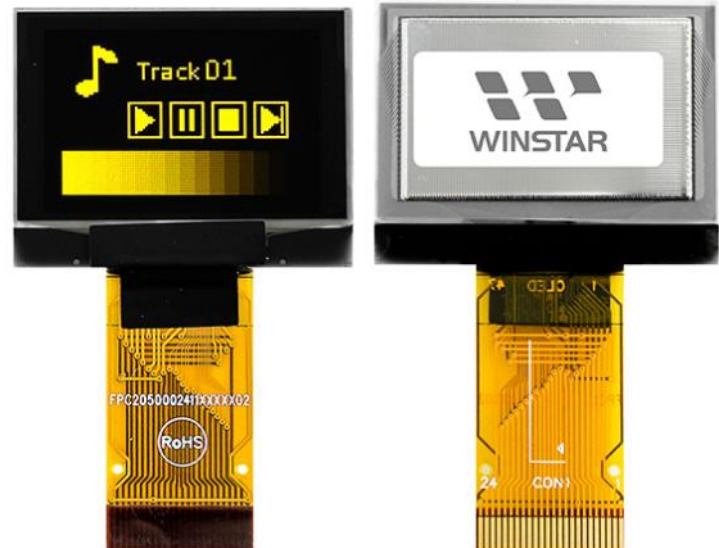
FS-S version

Product Introduction - 1.1 inch COG OLED WEO009664B

WEO009664B is a 1.1 inch passive matrix OLED display module which is made of 96x64 dots. The WEO009664B is built in with SSD1327 IC, it supports 6800/8080 8-bit parallel, I2C, and 4-Wire SPI interface, 3V power supply, 1/64 duty cycle and 16 gray scale. This 1.1" COG WEO009664B model can be regarded as an alternative of 1.1" TAB WEX009664A/B model which was be EOL in 2017. These two models have similar Active area size and having same diagonal size of 1.1 inch.

The WEO009664B is a COG structure OLED display which is ultra thin and no need of backlight; it's lightweight and low power consumption. This 1.1 inch OLED module is suitable for portable device, personal care appliance, health device, meter device, etc. The released emitting color for this item is available in yellow, other colors will be released soon. WEO009664B module can be operating at temperatures from -40°C to $+80^{\circ}\text{C}$; its storage temperatures range from -40°C to $+85^{\circ}\text{C}$.

Item-WEO009664B	Dimension
Dot Matrix	96 x 64 Dots
Module dimension	29.00 x 22.50 x 1.65 mm
Active Area	22.53 x 15.01 mm
Pixel Size	0.205 x 0.205 mm
Pixel Pitch	0.235 x 0.235 mm
Display Mode	Passive Matrix
Available Color	Yellow
Drive Duty	1/64 Duty
IC	SSD1327
Interface	4-Wire SPI, I2C, 6800, 8080
Size	1.1 inch

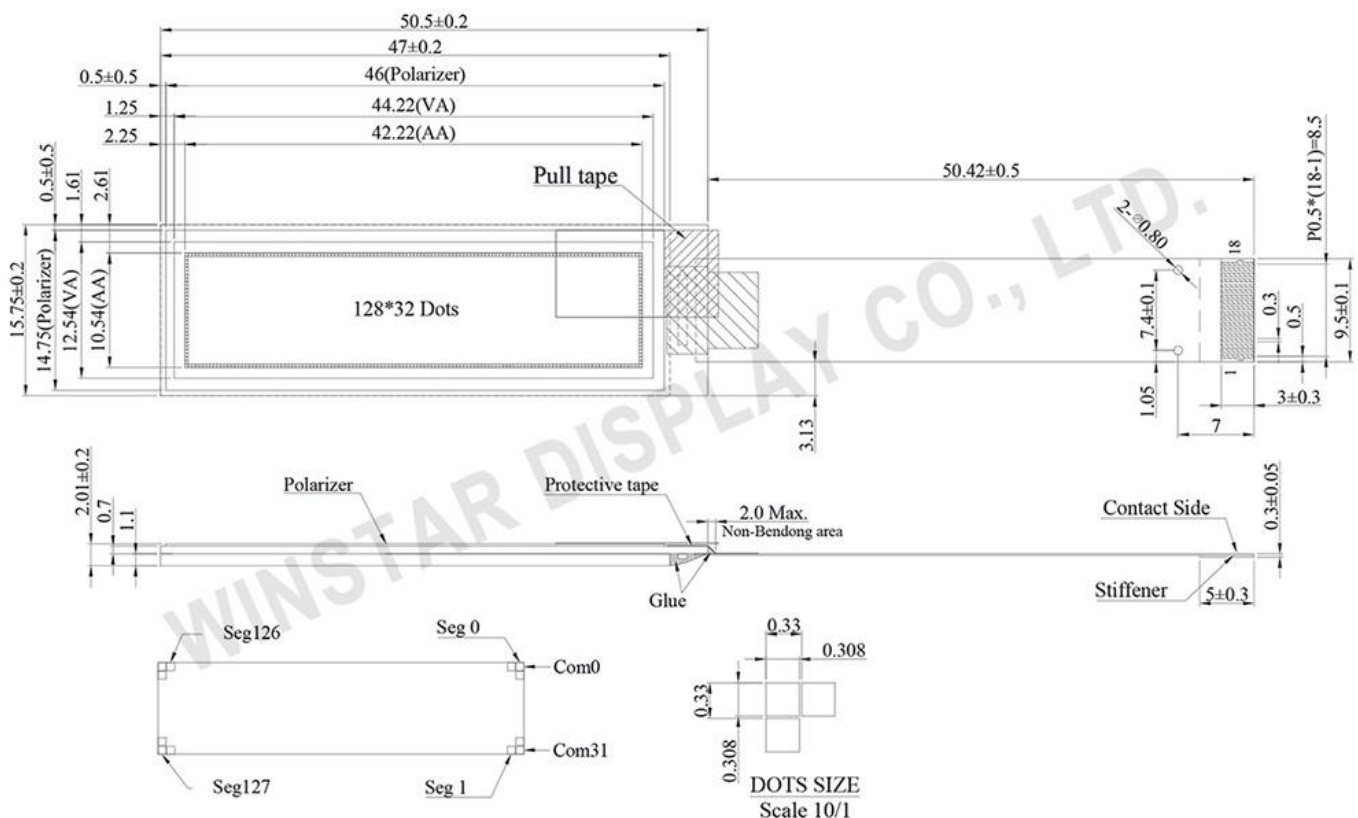


Product Introduction - 1.71 inch COG OLED WEO012832G

WEO012832G is a 1.71 inch passive matrix OLED display module which is made of 128x32 dots. The module is built in with SSD1307 IC, it supports I2C and 4-Wire SPI interface, 3V power supply, 1/32 duty cycle.

The WEO012832G is a COG structure OLED display which is ultra thin and no need of backlight; it's lightweight and low power consumption. This 1.71 inch OLED module is suitable for smart home application, portable device, health device, testing equipment, etc. The released emitting color for this item is available in white; other colors will be released soon. WEO012832G module can be operating at temperatures from -40°C to $+80^{\circ}\text{C}$; its storage temperatures range from -40°C to $+85^{\circ}\text{C}$.

Item-WEO012832G	Dimension
Dot Matrix	128 x 32 Dots
Module dimension	50.50 x 15.75 x 2.01 mm
Active Area	42.22 x 10.54 mm
Pixel Size	0.308 x 0.308 mm
Pixel Pitch	0.33 x 0.33 mm
Display Mode	Passive Matrix
Available Color	White
Drive Duty	1/32 Duty
IC	SSD1307ZD
Interface	SPI, I2C
Size	1.71 inch



Introduction - 2.23 inch COB+PCB OLED WEP012832A

Winstar released a new COG with PCB OLED WEP012832A model; it is 2.23" diagonal made of 128x32 pixels, it's very readable due to the high contrast and bigger size of OLED display. The module is built in with SSD1305Z IC, it supports 6800/8080 8-bit parallel, I2C, and 4-Wire SPI interface, supply voltage for Logic from 3V ~ 5V.

The WEP012832A is a COG with PCB OLED display which is having a 1x20 pin header and a 1x8 pin header on module, also having mounting holes on PCB board. We provide a mini vibration motor and buzzer optional for this WEP012832A module. Also, customers can choose Hot Bar Soldering or metal pins with FPC and connector (part no. will be different) for your applications .

This 2.23 inch OLED module is suitable for smart home application, medical device, smart control, etc. The released emitting color for this item is available in white. WEP012832A module can be operating at temperatures from -40°C to +80°C; its storage temperatures range from -40°C to +85°C.

Item-WEP012832A	Dimension
Dot Matrix	128 x 32 Dots
Module dimension	66.5 x 35.0 x 9.0 mm
Active Area	55.018 x 13.098 mm
Pixel Size	0.408 x 0.388 mm
Pixel Pitch	0.43 x 0.41 mm
Display Mode	Passive Matrix
Available Color	White
Drive Duty	1/32 Duty
IC	SSD1305Z
Interface	6800, 8080, SPI, I2C
Size	2.23 inch

