

May., 2017

Winstar CEO Accepted a TV Interview for National Industrial Innovation Award

Winstar Display Co. has been rewarded as one of 2017 Outstanding Enterprise of National Industrial Innovation Award. The CEO of Winstar Display Co, Mr. Venson Liao, accepted a TV interview from USTV, a very famous TV News in Taiwan.

This award was given upon the facts that Winstar Display Co. has shown the ability of innovation and creativity for outstanding performance in all facets of our operations. The National Outstanding Enterprise Innovation Award is rewarded the Organization which is well operations in integration, innovation and value creation of culture, technology and services that have made an influential, innovative and creative contribution to the development of industry in Taiwan. Below link is the TV interview, welcome to watch it on YouTube or Winstar website.



► [Link to TV Interview on Winstar Website](#)

7" For HDMI Signal TFT-LCD Display- WF70BTIFHLHTX

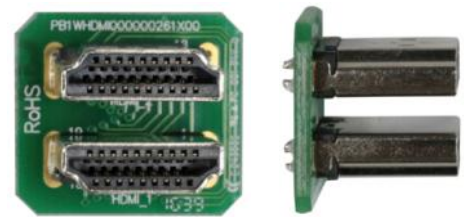
Winstar 7" WF70BTIFHLHTX is a medium-sized for HDMI signal display, made of high resolution 1024x600 dots. This 7 inch TFT Display WF70BTIFHLHTX comes with a board which supports HDMI signal interface and a 40-pin connector on it; it is designed to make Raspberry Pi usage become easily. This TFT display has a USB interface resistive touch screen overlay on TFT panel. As to the capacitive touch panel, it is still under development and it will be released soon. We designed a connector part no. WWHDMI-00# for option, the customers can use it to connect WF70BTIFHLHTX module with your Raspberry Pi directly.

You can simply use this medium-sized TFT display with your Raspberry Pi, and also you can use it as computer display with any device which supports HDMI signal output. This 7" TFT model comes in 1024x600 resolutions that is high quality and would be good for embedded computing usage. Please note, this part no. WF70BTIFHLHTX does not include a HDMI connector or USB cable.



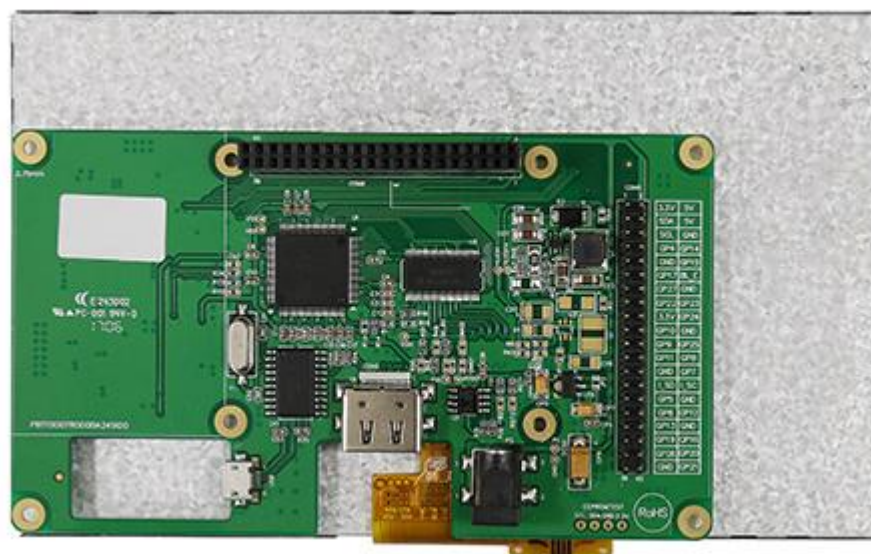
Front Side:

- 7" TFT-LCD
- With Resistive Touch Panel



Part No. WWHDMI-00#

- HDMI connector for TFT module and Raspberry Pi



Back Side:

- With Controller Board
- Support HDMI interface input
- RTP USB interface
- A 40-pin connector on board

Features & Specification of WF70BTIFHLHTX

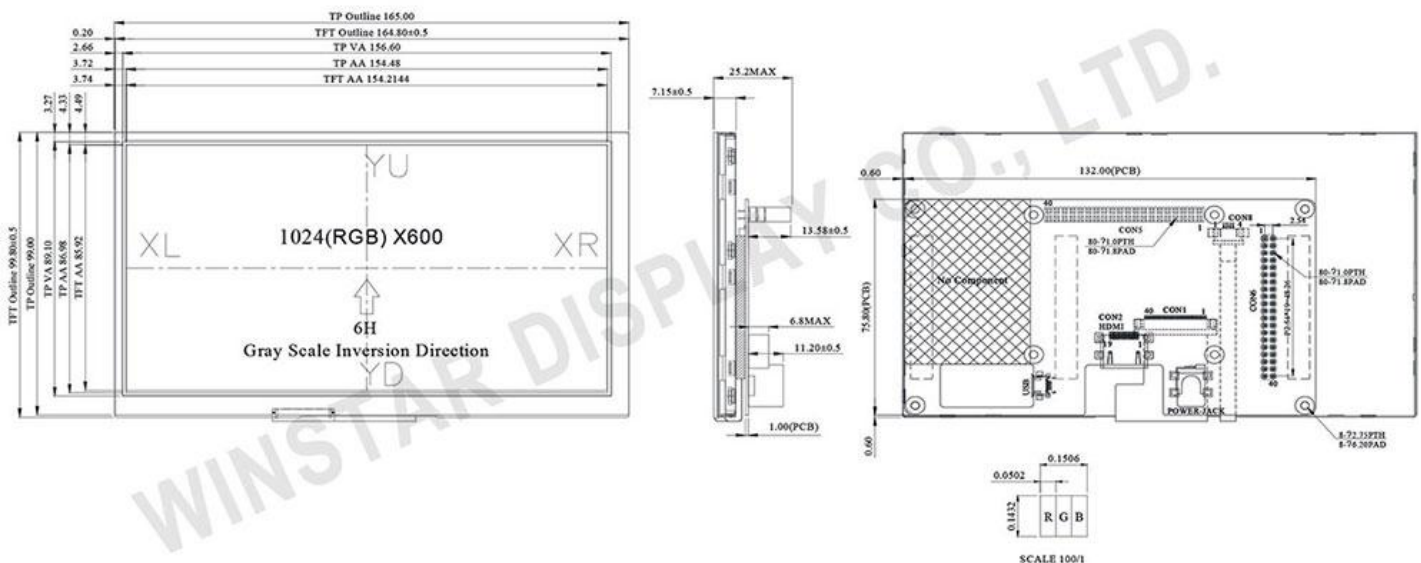
Item-WF70BTIFHLHTX	Dimension
Size	7 inch
Dot Matrix	1024 x RGBx600(TFT)
Module dimension	165.0 x 99.8 x 25.2 mm
Active area	154.2114 x 85.92 mm
Dot pitch	0.1506 x 0.1432 mm
LCD type	TFT, Normally White, Transmissive
View Direction	12 o'clock
Gray Scale Inversion Direction	6 o'clock
Aspect Ratio	16:9
Backlight Type	LED, Normally White
Touch Panel	RTP option (CTP underdevelopment)
Interface	Support HDMI Connector (Only DVI Signal)
Surface	Anti-Glare

Features:

- ▶ Good touch response
- ▶ Fast response time
- ▶ Not only for Raspberry Pi
- ▶ Not only for mini-PCs, it can work as a computer monitor
- ▶ Support RTP with USB interface
- ▶ Support CTP option (will be released soon)
- ▶ Without Touch panel option is available
- ▶ HDMI connector for TFT module with Raspberry Pi optional

Specifications:

- ▶ 7 inch TFT Resistive touch screen display
- ▶ 1024x600 Resolution
- ▶ Support HDMI signal input
- ▶ Support 40 pins GPIO
- ▶ USB touch and power, 5V@1A
- ▶ Operating Temperature: -20°C to +70°C
- ▶ Storage Temperature: -30°C to +80°C

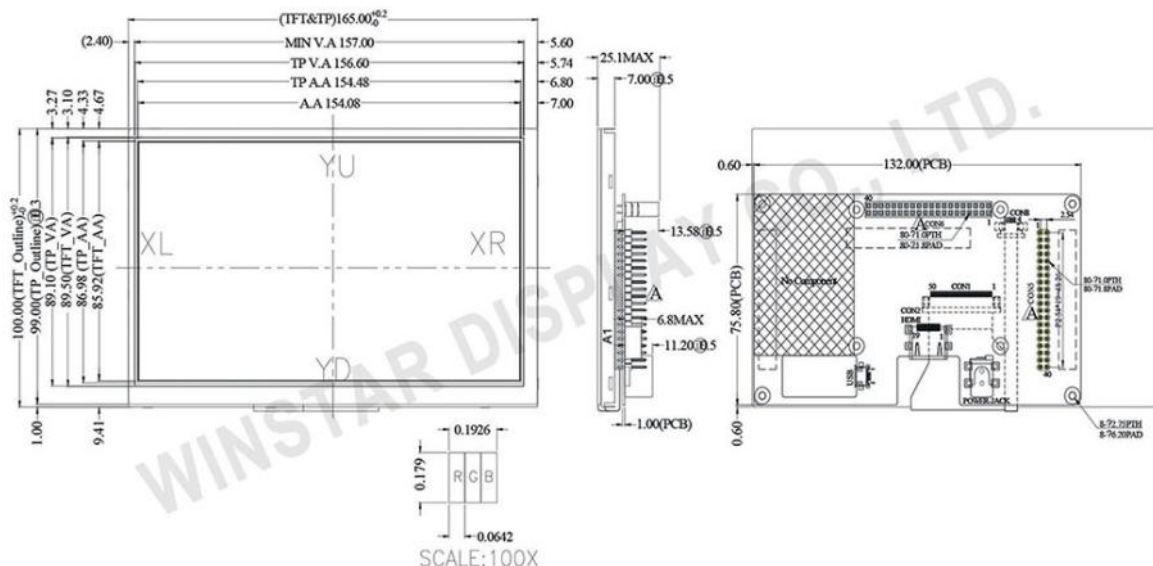


7" For HDMI Signal TFT-LCD Display- WF70GTIFGDHTX

WF70GTIFGDHTX is a 7 inch medium-sized for HDMI signal TFT-LCD display, made of resolution 800x480 dots. This 7 inch TFT Display comes with a board which supports HDMI signal interface and a 40-pin connector on it; WF70GTIFGDHTX is designed to make Raspberry Pi usage become easily. This WF70GTIFGDHTX TFT display has a USB interface Resistive Touch screen overlay on TFT panel. As to the Capacitive Touch Panel, it is still under development and it will be released soon. We designed a connector part no. WWHDMI-00# for option, the customers can use it to connect WF70GTIFGDHTX module with your Raspberry Pi directly.

You can simply use this medium-sized TFT display with your Raspberry Pi, and also you can use it as computer display with any device which supports HDMI signal output. This 7" TFT display is 800x480 resolutions, which is just enough to run most software, but still small enough that it can be used in portable or embedded projects without the bulk. Please note, this part no. WF70GTIFGDHTX does not include a HDMI connector or USB cable.

Item-WF70GTIFGDHTX	Dimension
Size	7 inch
Dot Matrix	800 x RGBx480(TFT)
Module dimension	165.0 x 100 x 25.1 mm
Active area	154.08 x 85.92 mm
Dot pitch	0.0642 x 0.179 mm
LCD type	TFT, Normally White, Transmissive
View Direction	12 o'clock
Gray Scale Inversion Direction	6 o'clock
Aspect Ratio	16:9
Backlight Type	LED, Normally White
Interface	Support HDMI Connector (Only DVI Signal)
Touch Panel	RTP option (CTP underdevelopment)
Surface	Anti-Glare



10.1" For HDMI Signal IPS TFT-LCD - WF101FSAFPLHTX

WF101FSAFPLHTX is a 10.1 inch high brightness version TFT display with incredibly high resolution and great angle-visibility. This 10.1" TFT display is having IPS TFT panel which supports HDMI signal interface output, it's made of high resolution WXGA 1280x800. This 10.1" TFT WF101FSAFPLHTX comes with a control board supports HDMI signal interface signal input; it is designed to make Raspberry Pi usage become easily. WF101FSAFPLHTX has a USB interface Resistive Touch screen overlay on TFT panel. As to the Capacitive Touch Panel, it is still under development and it will be released soon. Winstar has a connector part no. WWHDMI-00# for option, the customers can use it to connect WF101FSAFPLHTX module with your Raspberry Pi directly.

You can simply use this TFT display with your Raspberry Pi, or also you can use is as computer display with any device which supports HDMI signal output. This 10.1" TFT model comes in 1280x800 resolutions that would be good for embedded computing usage. Please note, this part no. WF101FSAFPLHTX does not include an HDMI connector or USB cable.

Item-WF101FSAFPLHTX	Dimension
Screen Diagonal	10.1 inch
Number of Pixels	1280 x 3(RGB) x 800
Module dimension	230.56 x 155.01 x 27.7 mm
Active area	216.96 x 135.6 mm
Pixel pitch	0.1695 x 0.1695
Display Mode	Normally Black
Pixel Arrangement	R.G.B. Vertical Stripe
Backlight Type	LED, Normally White
Aspect Ratio	16:09
Electrical Interface (Logic)	Support HDMI Connector (Only DVI Signal)
Touch Panel	RTP option (CTP underdevelopment)
Surface	Anti-Glare

