



WINSTAR Display Co.,Ltd.
華凌光電股份有限公司



SPECIFICATION

MODEL NO. : WLOF00050000FGAADSA00

Summary

5 Inch Smart Display Feature

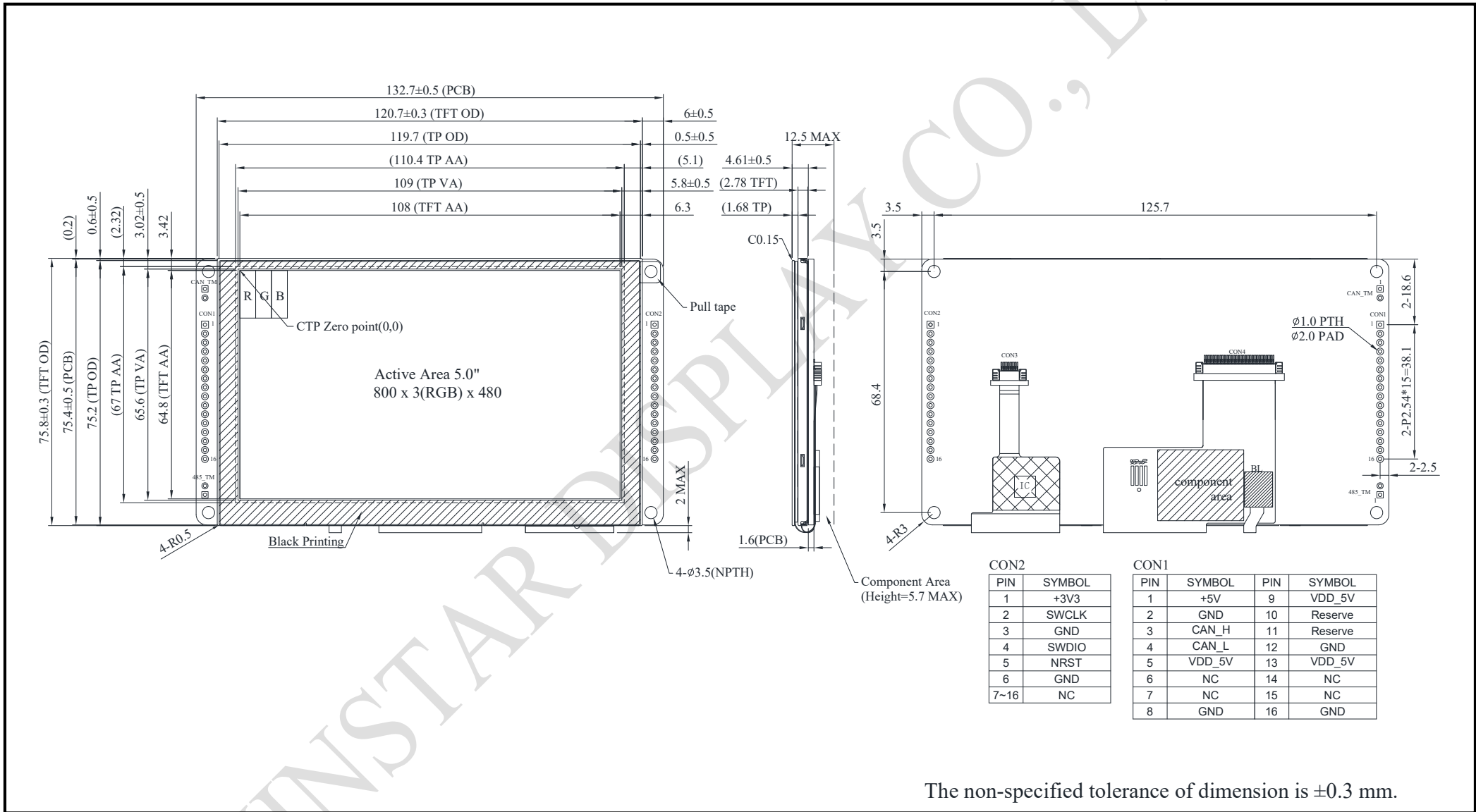
1. DC 5V working voltage.
2. Self-testing after booting function.
3. CAN bus communication interface.
4. Supports Custom CAN ID protocol, default baud rate at 250KB.
5. Built in 16M external flash memory to store the font and Object Dictionary Data.
6. Support capacitive touch panel (PCAP).
7. Smart Display scenario is slave device and controlled by Master Device's instruction.
8. Build in buzzer and can be controlled by Master Device.
9. Demo set HOST can be used on multiple platforms, such as Computer (with USB to CAN Dongle), MCU, Raspberry Pi (with PiCAN2).

Product information

General information

Item	Standard Value	Unit
Operating voltage	5	Vdc
Communication Interface	CAN bus differential ± 3.3	Vpp
MCU	STM32F750	N/A
Flash Memory	16	MB
SDRAM Frequency	108	MHz
LCD display size	5.0	inch
Dot Matrix	800× 3(RGB) × 480	dot
Module dimension	132.7(W) ×75.8(H) ×12.5	mm
Active area	108(W) ×64.8 (H)	mm
Dot pitch	0.135(W) ×0.135(H)	mm
Brightness	Min: 300; Typ: 400	cd/m ²
LCD type	TFT, Normally White, Transmissive	
View Direction	80/80/80/80	
Aspect Ratio	5:3	
Touch Panel	Projected Capacitive Touch Panel (PCAP)	
Surface	Glare	

Contour Drawing



CON2

PIN	SYMBOL
1	+3V3
2	SWCLK
3	GND
4	SWDIO
5	NRST
6	GND
7~16	NC

CON1

PIN	SYMBOL	PIN	SYMBOL
1	+5V	9	VDD_5V
2	GND	10	Reserve
3	CAN_H	11	Reserve
4	CAN_L	12	GND
5	VDD_5V	13	VDD_5V
6	NC	14	NC
7	NC	15	NC
8	GND	16	GND

The non-specified tolerance of dimension is ±0.3 mm.

Absolute Maximum Ratings

Item	Symbol	Min	Typ	Max	Unit
Operating Temperature	TOP	-30	—	+80	°C
Storage Temperature	TST	-30	—	+80	°C

Electrical Characteristics

Item	Symbol	Min	Typ	Max	Unit
Supply Voltage	VCC	4.75	5	5.25	V
Supply Current	ICC		430		mA

BOM

Item	Description
LCM	WF50FTWAGDNG0#
PCBA	SV10005R000FF00N0100

Interface

CON1 definition:

Pin	Symbol	Function
1	+5V	Power supply 5V input
2	GND	Power supply GND input
3	CAN_H	CAN bus D+
4	CAN_L	CAN bus D-
5	VDD_5V	Power supply 5V input
6	NC	--
7	NC	--
8	GND	Power supply GND input
9	VDD_5V	Power supply 5V input
10	Reserve	USART RX interface(Reserve)
11	Reserve	USART TX interface(Reserve)
12	GND	Power supply GND input
13	VDD_5V	Power supply 5V input
14	NC	--
15	NC	--
16	GND	Power supply GND input

CON2 definition:

Pin	Symbol	Function
1	+3V3	3.3V power for JTAG interface
2	SWCLK	CLK pin for JTAG interface
3	GND	GND for JTAG interface
4	SWDIO	Data pin for JTAG interface
5	NRST	Reset pin for JTAG interface
6	GND	GND
7-16	NC	--